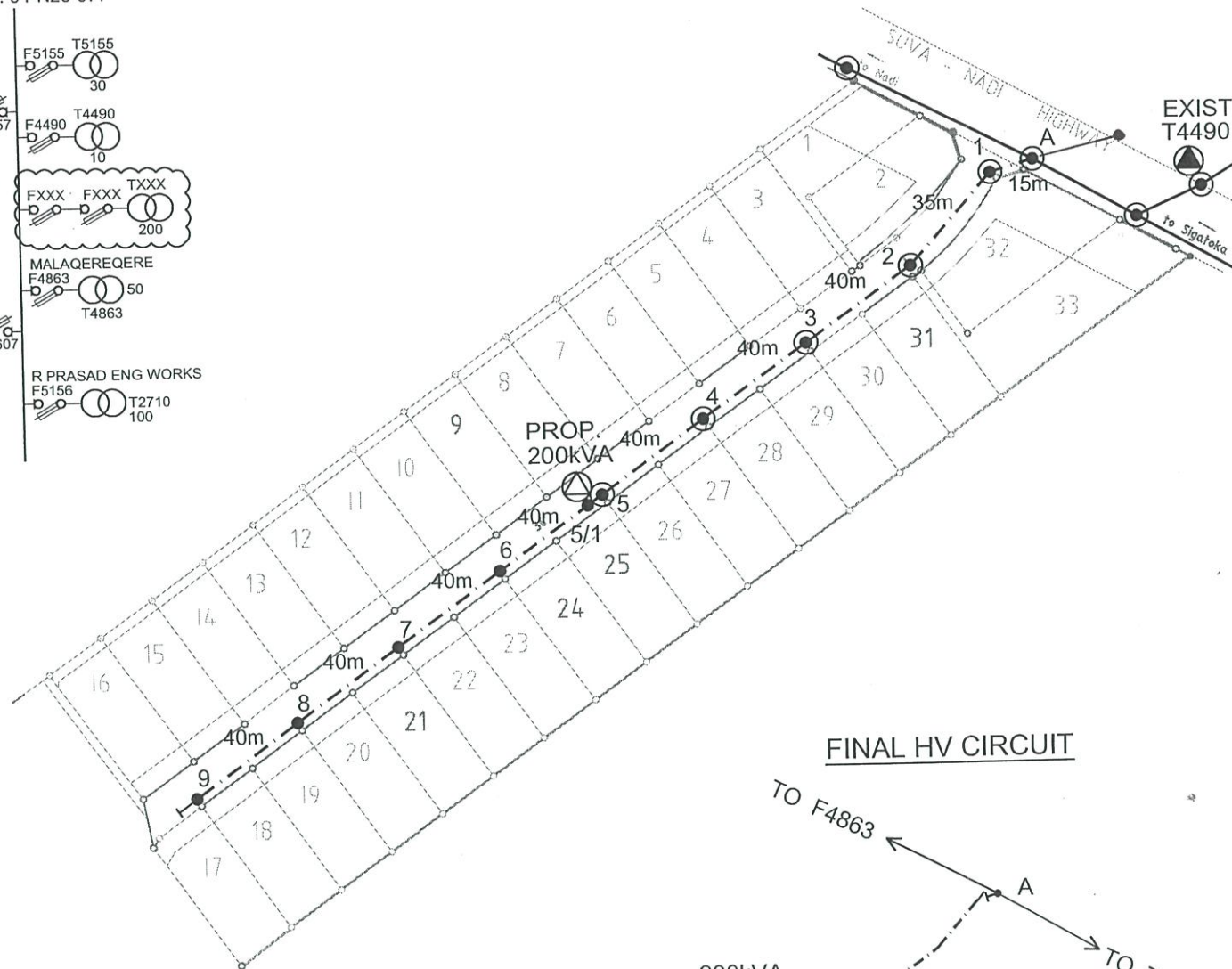
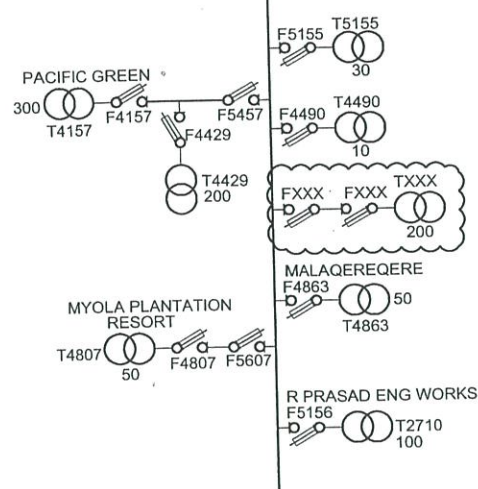


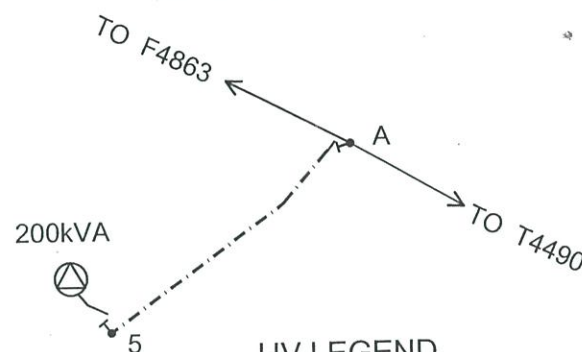
A3 04 N56 166

SINGLE LINE DIAGRAM

DRWG NO. 04 N20 077



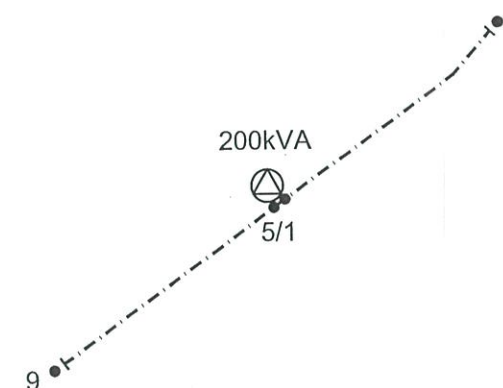
FINAL HV CIRCUIT



HV LEGEND

- HV POLE
 - ⊗ PROP. POLE MOUNTED TRANSFORMER
 - DROPOUT FUSE
 - EXISTING O/H LINE
 - STRING 3 x 7/4.39AAC WASP
- TOTAL ROUTE LENGTH = 170m

FINAL LV CIRCUIT



LV LEGEND

- LV POLE
 - TERMINATION POINT
 - ⊗ BRIDGING POINT
 - ⊗ PROPOSED TRANSFORMER
 - EXISTING O/H LINE
 - STRING 4 x 7/4.39AAC WASP
- TOTAL ROUTE LENGTH = 315m

LEGEND

- LV POLE
- ⊗ HV & LV POLE
- ⊗ EXISTING POLE MOUNTED TRANSFORMER
- ⊗ PROP. POLE MOUNTED TRANSFORMER
- EXISTING O/H CONDUCTOR
- PROPOSED O/H CONDUCTOR
- GROUND STAY
- FLY STAY

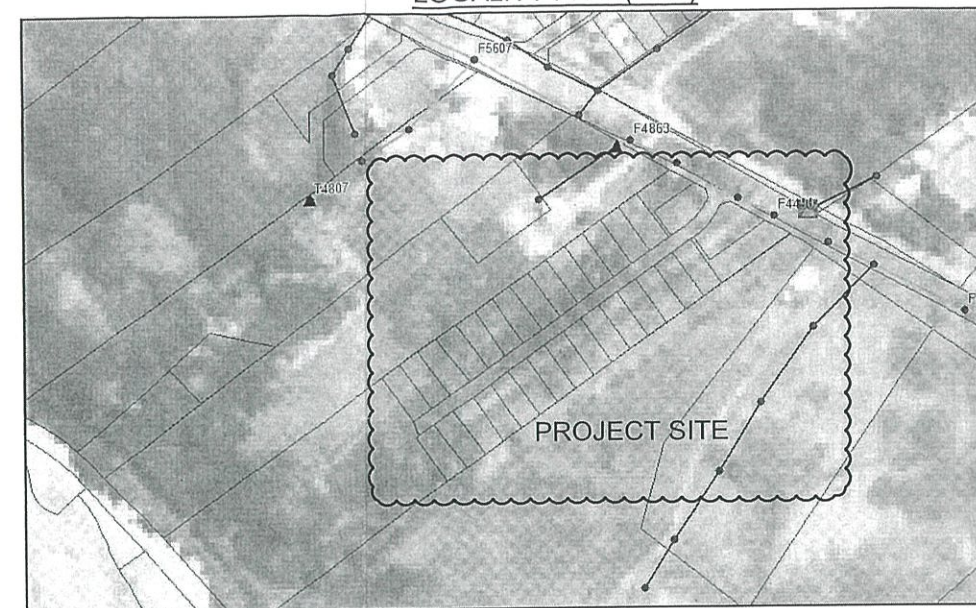
SCOPE OF WORK

- ERECT 11m RC POLE AT LOCATION MARKED 5.
- ERECT 10.2m RC POLE AT LOCATIONS MARKED 1, 2, 3, 4, 5/1, 6, 7, 8, & 9.
- STRING 3Ø HV WASP CONDUCTOR FROM POLE A TO 5 VIA POLES 1, 2, 3 & 4.
- INSTALL 200kVA TRANSFORMER AT H - POLE 5/1.
- STRING 3Ø LV WASP CONDUCTOR FROM POLE 1 TO 9 VIA POLES 2, 3, 4, 5, 5/1, 6, 7 & 8.

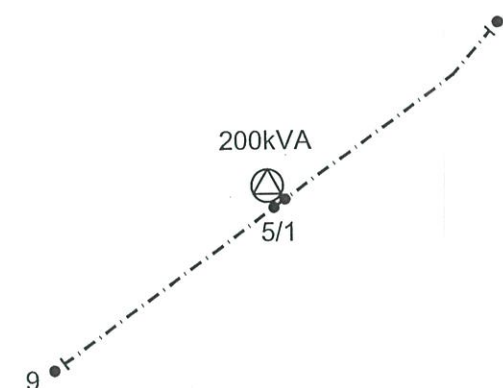
NOTE

- USE BAULK FOOTING FOR ALL POLE BASES
- PEGGING TO BE DONE DURING CONSTRUCTION

LOCALITY PLAN(NTS)



FINAL LV CIRCUIT



POLE SCHEDULE

POLE SCHEDULE									
POLE No.	POLE DESCRIPTION WOOD/CONC OR EXISTING	POLE Length and Strength m/kN	SPAN m	ANGLE OF LINE DEVIATION IN DEG.	POLE TOP DESCRIPTION OR TYPE No.				REMARKS
						GRND	SIDE-WALK	FLY	
A	EXIST.	EX		—	EXIST +18B			†	INSTALL T/OFF DOF
1	CONC.	10.2/6	15	—	14B+3B				STRING 3ø HV & 3ø LV
2	CONC.	10.2/6	35	—	11B+1B				" " " "
3	CONC.	10.2/6	40	—	11B+1B				" " " "
4	CONC.	10.2/6	40	—	11B+1B				" " " "
5	CONC.	11/5.5	40	—	13B+3B+3B+				STRING 3ø HV & 3ø LV INSTALL 200kVA TRXF
5/1	CONC.	10.2/6			REM				STRING 3ø LV ONLY
6	CONC.	10.2/6	40	—	1B				" " " "
7	CONC.	10.2/6	40	—	1B				" " " "
8	CONC.	10.2/6	40	—	1B				" " " "
9	CONC.	10.2/6	40	0	3B	1			" " " "

FIJI ELECTRICITY AUTHORITY

SUPPLY TO PROP. SUBD OF BAL LOT 1, DP 1925
SIGATOKA DISTRICT
MALAQEREQERE, STAGE 1 (G148/17)

DRAWING NUMBER

A3 04 N56 166

SCALE 1 : 2000



DRAWN	JONE	18.12.17
CHECKED	DEEPAK	02.01.18
CHIEF DRAUGHTSMAN	JONE	02/01/18
TEAM LEADER DESIGN & PLANNING	Ritesh	02/01/18
ENGINEER	Lenora	02/01/18
HEAD OF DEPARTMENT	Lenora	21/1/18

0	ORIGINAL ISSUE SI G148/17	13.12.17	JV				
No.	REVISION	DATE	BY	CHK	PSD	APP	