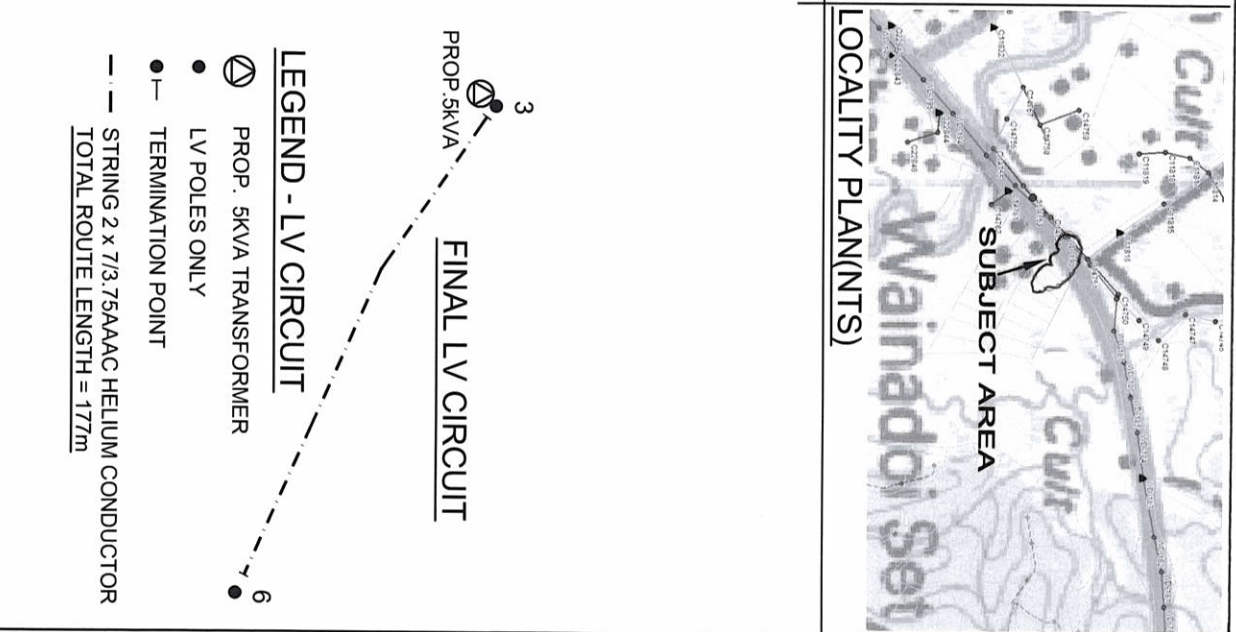
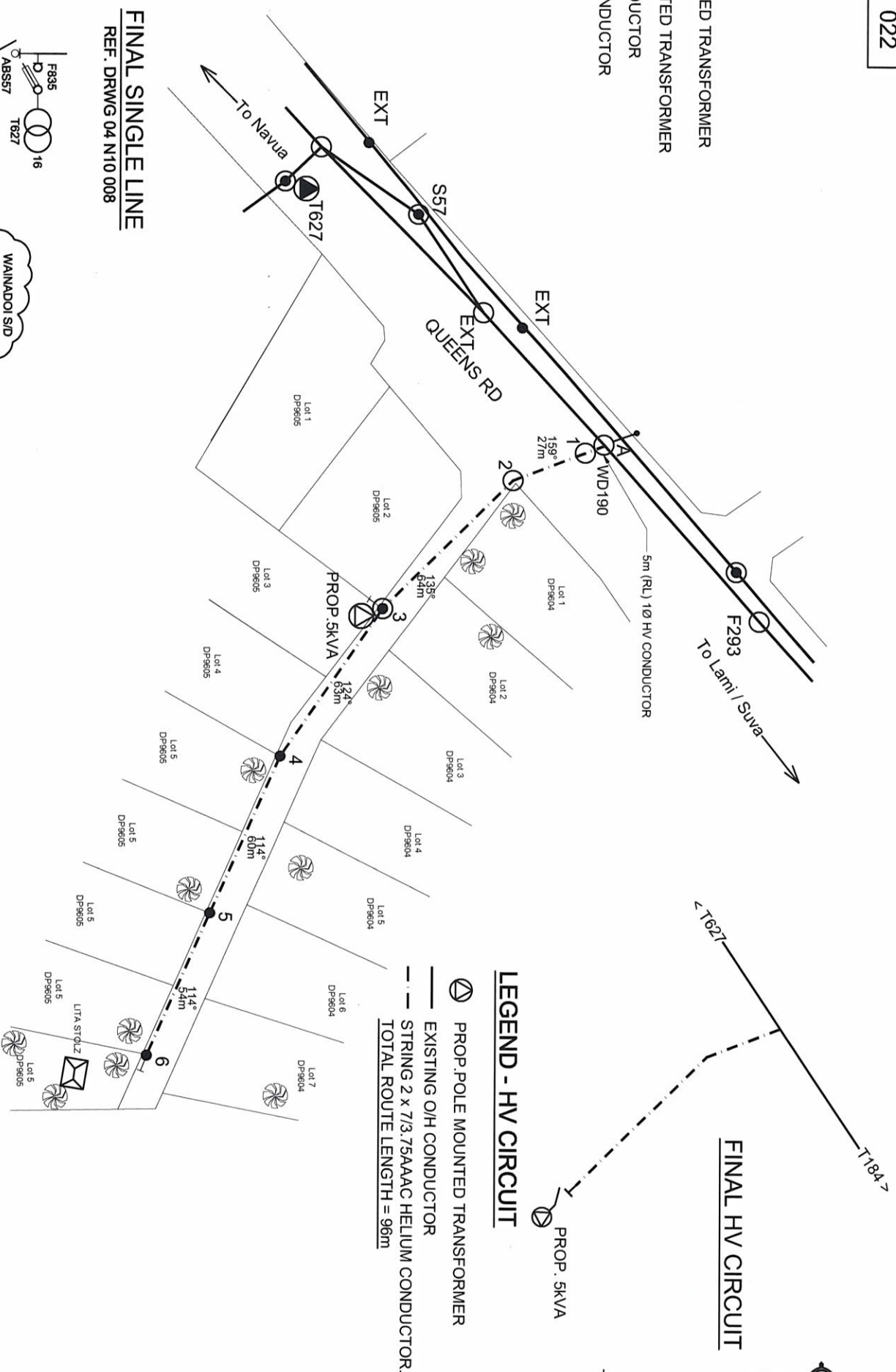


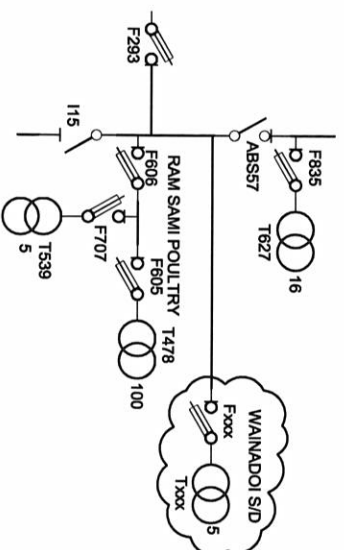
LEGEND

- LV POLE
- HV POLE
- ◉ HV & LV POLE
- ◊ PROP. POLE MOUNTED TRANSFORMER
- ◐ EXIST. POLE MOUNTED TRANSFORMER
- EXISTING O/H CONDUCTOR
- - - PROPOSED O/H CONDUCTOR
- ├ GROUND STAY
- FLY STAY



FINAL SINGLE LINE

REF. DRWG 04 N10 008



NOTES

1. INSTALL 10.2m CONCRETE POLES 1,4,5 & 6 AND 11.0m CONCRETE POLE2 & 3.
2. STRING 1Ø HV CONDUCTOR FROM EXISTING POLE A TO PROPOSED POLE 3.
RL = 96m
3. STRING 1Ø LV CONDUCTORS FROM PROPOSED POLE 3 TO POLE 6. RL = 177m
4. INSTALL AND COMMISSION 1 x 5kVA TRANSFORMER ON POLE 3.
5. INSTALL GROUND & FLY STAY WHERE REQUIRED.

POLE SCHEDULE								
POLE NO.	POLE DESCRIPTION WOOD/CONC OR EXIST	POLE LENGTH STRENGTH m/kN	SPAN m	ANGLE OF DEVIATION IN DEG.	POLE TOP DESCRIPTION OR DRESSINGS	STAYS		REMARKS
						GRND	FLY	
A	EXIST	10.2/6	EX	EX	EXIST+18A		1	EXIST + STRING NEW HV LINE
1	CONC.	10.2/6	5	0	11A			STRING 1Ø HV ONLY
2	CONC.	11/5.5	27	24	12A			" " " " "
3	CONC.	11/5.5	64	11	13A+3A	1		PROP 1Ø HV + PROP 1Ø LV + PROP 5KVA TRXF
4	CONC.	10.2/6	63	10	1A			PROP 1Ø LV
5	CONC.	10.2/6	60	0	1A			" " " " "
6	CONC.	10.2/6	54	-	3A	1		" " " " "

[illegible]