

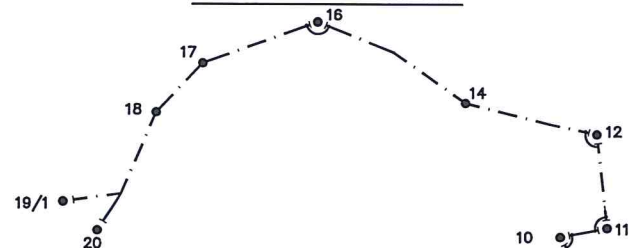
LEGEND

- LV POLE
- HV POLE
- ⦿ HV & LV POLE
- ⊖ PROP. POLE MOUNTED TRANSFORMER
- ⊕ EXIST. POLE MOUNTED TRANSFORMER
- EXISTING O/H CONDUCTOR
- - - PROPOSED O/H CONDUCTOR
- ├ GROUND STAY
- └ FLY STAY

SCOPE OF WORK:

1. ERECT 10.2M WOODEN POLE AT POLE MARKED 1,2,3,4,4/2,4/3,4/4,4/5,4/6,4/7,4/8,4/9,5,6,7,8,9,10,11,12,13,14,15,16,17,18,19,19/1 & 20.
2. ERECT 11M RC POLE AT POLE MARKED 4/1.
3. STRING SINGLE PHASE HV CONDUCTOR AT POLE A TO POLE 4/1 VIA B,C,1,2,3 & 4 .
4. STRING SINGLE PHASE LV CONDUCTOR AT POLE 4 TO POLE 20 VIA ,4/2,4/3,4/4,4/5,4/6,4/7,4/8,4/9,5,6,7,8,9,10,11,12,13,14,15,16,17,18,19,19/1 & 20.
5. INSTALL 16KVA TRANSFORMER AT POLE 4/1 .
6. MOVE DOWN LV DRESSING AT POLE B
7. HEAVY VM.






FINAL - LV CIRCUIT



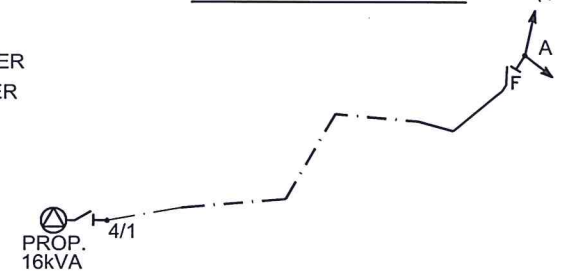
LEGEND - LV CIRCUIT

- ⊗ PROP. TRANSFORMER
 - LV POLES ONLY
 - ⊙- TERMINATION POINT
 - ⊕- BRIDGING POINT
 - ⊙- STRAIN POINT
 - - - STRING 2 x 7/3.75AAAC HELIUM
- TOTAL ROUTE LENGTH = 2186m

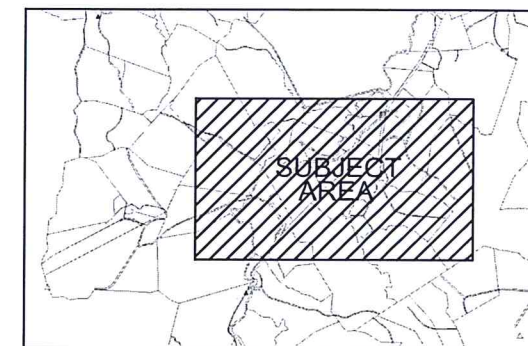
LEGEND - HV CIRCUIT

- HV POLE
 -  EXIST. POLE MOUNTED TRANSFORMER
 -  PROP. POLE MOUNTED TRANSFORMER
 -  DROP OUT FUSE
 -  EXISTING O/H CONDUCTOR
 -  STRING 2 x 7/3.75AAAC HELIUM.
- TOTAL ROUTE LENGTH = 523m

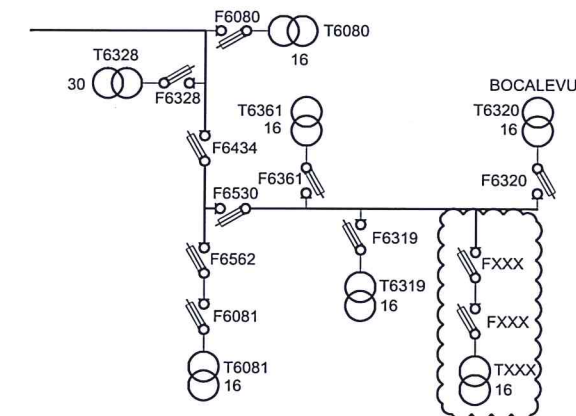
FINAL - HV CIRCUIT



LOCALITY PLAN



SINGLE LINE DIAGRAM:
DRWG No. : 04 N30 012



POLE SCHEDULE

| POLE NO | POLE DESCRIPTION (WOOD, CONC OR EXISTING) | POLE LENGTH & STRENGTH H (m/kN) | SPAN (m) | ANGLE OF LINE DEVIATION (°) | POLE DRESSING | STAYS | | | REMARKS |
|---------|--|------------------------------------|-------------|-----------------------------------|---------------|-------|-----|------------|----------------------------|
| | | | | | | GRND | FLY | GRND & FLY | |
| A | EXIST | EXIST | — | | EXIST+18A | | | | INSTALL A DROP OUT FUSE |
| B | " | " | 43 | — | 11A+EXIST | | | | STRING 1φ HV ONLY |
| C | " | " | 66 | — | 14A+EXIST | 1 | | | " |
| 1 | WOODEN | 10.2/6 | 38 | 10 | 11A | | | | " |
| 2 | " | " | 88 | 65 | 14A | 1 | | | " |
| 3 | " | " | 102 | 55 | 14A | | 1 | | " |
| 4 | " | " | 109 | 5 | 11A+3A+3A | 1 | | | STRING 1φ HV & LV ONLY |
| ½ | CONC. | 11/5.5 | 79 | 17 | 13A+1A+REM | 1 | | | INSTALL 16kVA TX |
| ½ | WOODEN | 10.2/6 | 102 | 30 | 2A | 1 | | | STRING 1φ LV ONLY |
| ¾ | " | " | 112 | 31 | 2A | 1 | | | " |
| ¾ | " | " | 80 | 4 | 1A | | | | " |
| ¾ | " | " | 102 | 5 | 1A | | | | " |
| ¾ | " | " | 74 | 51 | 4A | 1 | | | " |
| ¾ | " | " | 86 | 85 | 3A+3A | 2 | | | " |
| ¾ | " | " | 97 | 52 | 4A | 1 | | | " |
| ¾ | " | " | 132 | 0 | 3A | 1 | | | " |
| 5 | " | " | 30 | 29 | 2A | 1 | | | " |
| 6 | " | " | 56 | 67 | 4A | 1 | | | " |
| 7 | " | " | 80 | 16 | 2A | 1 | | | " |
| 8 | " | " | 65 | 18 | 2A | 1 | | | " |
| 9 | " | " | 80 | 57 | 4A | | 1 | | " |
| 10 | " | " | 63 | 109 | 3A+3A | 2 | | | " |
| 11 | " | " | 55 | 86 | 3A+3A | 2 | | | " |
| 12 | " | " | 110 | 71 | 4A | 1 | | | " |
| 13 | " | " | 56 | 2 | 1A | | | | " |
| 14 | " | " | 100 | 21 | 2A | 1 | | | " |
| 15 | " | " | 101 | 13 | 1A | | | | " |
| 16 | " | " | 95 | 42 | 4A | 1 | | | " |
| 17 | " | " | 140 | 27 | 2A | 1 | | | " |
| 18 | " | " | 78 | 20 | 1A | | | | " |
| 19 | " | " | 103 | 9 | 1A+3A | | | | " |
| 19½ | " | " | 60 | 0 | 3A | 1 | | | " |
| 20 | " | " | 50 | 0 | 3A | 1 | | | " |

[illegible]

| | | |
|--------------------|--------|----------|
| DRAWN | SHANE | 18.12.17 |
| CHECKED | SHANIL | 08.01.18 |
| CHIEF DRAUGHTSMAN | JUNE | 08.01.18 |
| TEAM LEADER | Ritesh | 08.01.18 |
| ENGINEER | ✓ Lena | 8/1/18 |
| HEAD OF DEPARTMENT | ✓ | 18/1/18 |

| FIJI ELECTRICITY AUTHORITY | | | |
|--|--|----------------|--------|
| SUPPLY TO BOCALEVU SETTLEMENT LABASA DISTRICT BOCALEVU AREA(LAB06-06A) | | DRAWING NUMBER | |
| | | A1 | 04 N92 |
| | | SCALE: 1:1000 | |