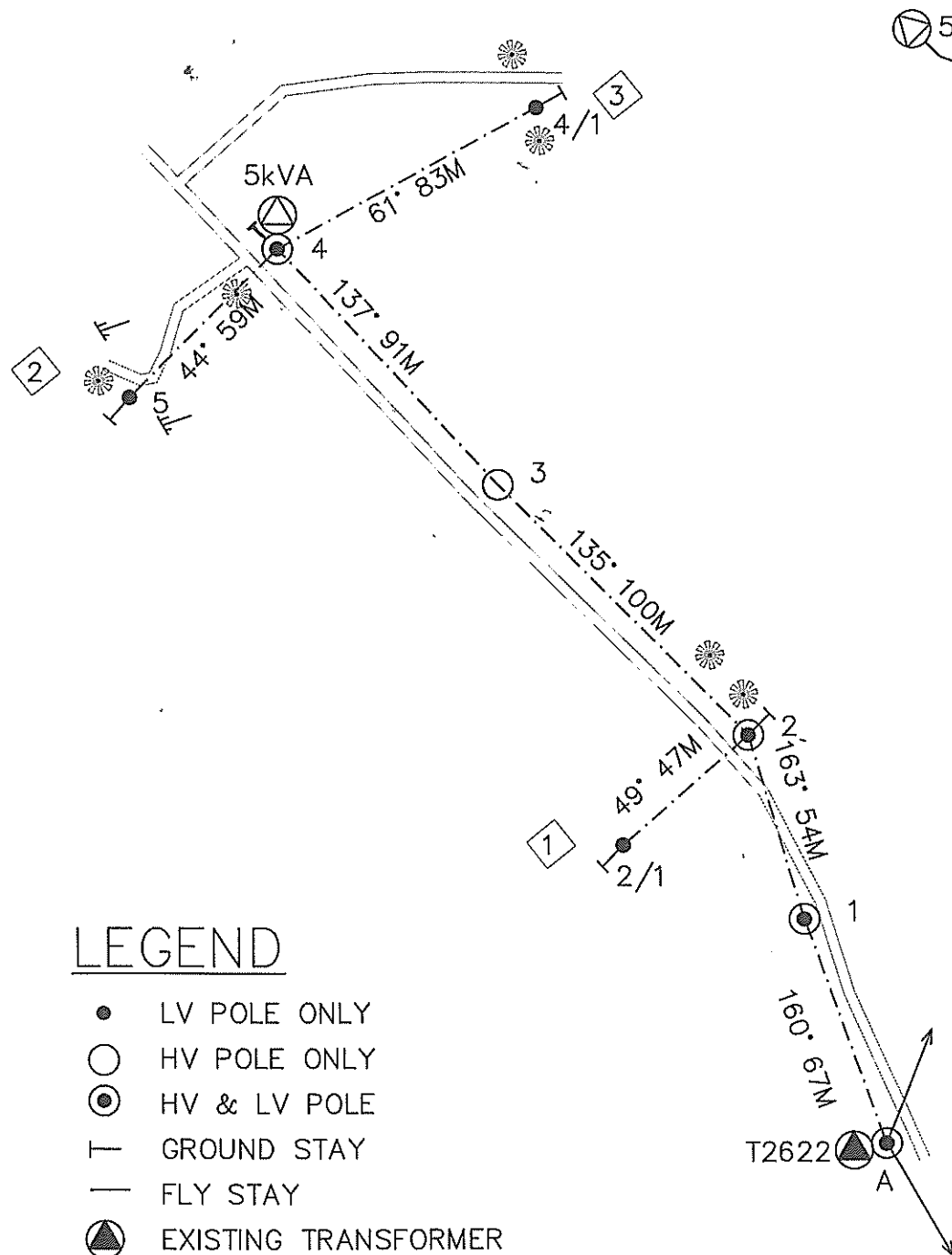


SCOPE OF WORK

1. ERECT 10.2m CONC POLE AT LOCATIONS MARKED 1,2,2/1,3,4/1 & 5
2. ERECT 11m CONC POLE AT LOCATION MARKED 4
3. STRING 1 ϕ HV HELIUM LINE FROM POLE A TO 4 VIA 1,2 & 3
4. INSTALL A 5kVA SWER TRANSFORMER AT POLE 4
5. STRING 1 ϕ LV HELIUM CONDUCTOR FROM POLE A TO 2/1 VIA 1 & 2 AND FROM POLE 4/1 TO 5 VIA 4

FINAL HV CIRCUIT



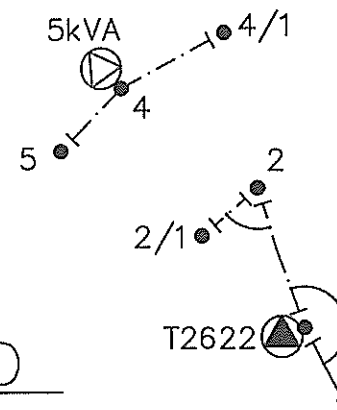
LEGEND

- LV POLE ONLY
- HV POLE ONLY
- ⊙ HV & LV POLE
- GROUND STAY
- FLY STAY
- ⊗ EXISTING TRANSFORMER
- ⊕ PROPOSED TRANSFORMER
- EXISTING O/H LINE
- - - PROPOSED O/H LINE

LEGEND

- HV POLE ONLY
 - DROP-OUT FUSE
 - ⊗ EXISTING TRANSFORMER
 - ⊕ PROPOSED TRANSFORMER
 - EXISTING O/H LINE
 - - - STRING 1 x 7/3.75AAAC HELIUM
- TOTAL ROUTE LENGTH = 312m

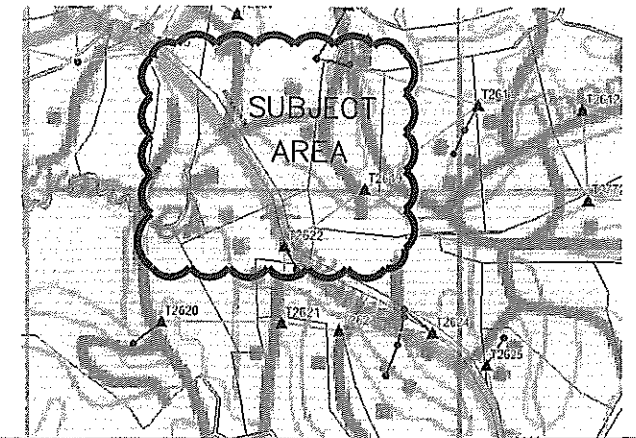
FINAL LV CIRCUIT



LEGEND

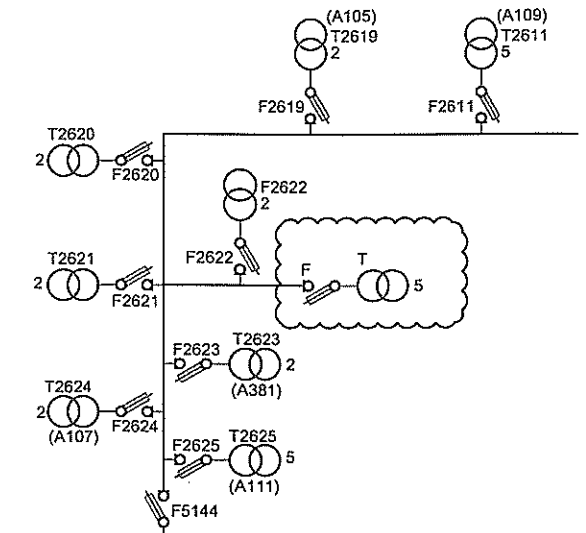
- TERMINATION POINT
 - BRIDGING POINT
 - STRAIN POINT
 - ⊗ EXISTING TRANSFORMER
 - ⊕ PROPOSED TRANSFORMER
 - EXISTING O/H LINE
 - - - STRING 2 x 7/3.75AAAC
- TOTAL ROUTE LENGTH = 310m

LOCALITY PLAN



SINGLE LINE DIAGRAM

DWG No. 04N20057



POLE SCHEDULE

Pole No.	POLE Description Wood/Con or exist	POLE Length and Strength m/kN	SPAN m	ANGLE OF LINE DEVIATION IN DEG.	POLE TOP Description OR	STAYS				REMARKS
						GRND	SIDE WALK	FLY	FLY GRND	
A	EXIST	-	-	-	Ex.+SWER13A					STRING 1 ϕ HV ONLY
1	CONC	10.2/6	67	3	SWER11A+1A					STRING 1 ϕ HV & LV
2	CONC	10.2/6	54	28/-	SWER12A+3A+3A	1				STRING 1 ϕ HV & LV
2/1	CONC	10.2/6	47	-	3A	1				STRING 1 ϕ LV ONLY
3	CONC	10.2/6	100	2	SWER11A					STRING 1 ϕ HV ONLY
4	CONC	11/5.5	91	-/17	SWER13A+1A+REM	1				INSTALL 5kVA TRANSF.
4/1	CONC	10.2/6	83	-	3A	1				STRING 1 ϕ LV ONLY
5	CONC	10.2/6	59	-	3A	1				STRING 1 ϕ LV ONLY

FIJI ELECTRICITY AUTHORITY

SUPPLY TO KEOLAIYA
NADI DISTRICT

KEOLAIYA AREA File No. NA04/12

DRAWING NUMBER

A3 04 N84 198

SCALE 1 : 2000



DRAWN	KELEVI	25.09.17
CHECKED	KAUSHAL	26.09.17
CHIEF DRAUGHTSMAN		25/09/17
TEAM LEADER DESIGN & PLANNING		26/9/17
ENGINEER		27/9/17
HEAD OF DEPARTMENT		27/9/17

0	ORIGINAL ISSUE	25.09.17	KM				
No.	REVISION	DATE	BY	CHK	PSD	APP	