






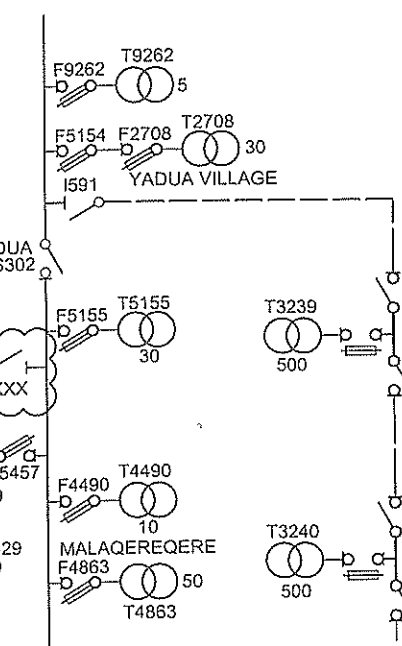


LEGEND

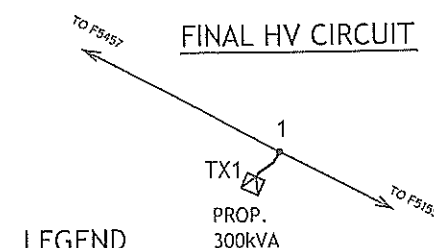
-  LV POLE TO BE REMOVED
 HV & LV POLE
 PILLAR BOX
 PROPOSED TRANSFORMER
 EXISTING O/H LINE
 EXISTING O/H LINE TO BE REMOVED
 PROPOSED U/G CABLE

SINGLE LINE DIAGRAM

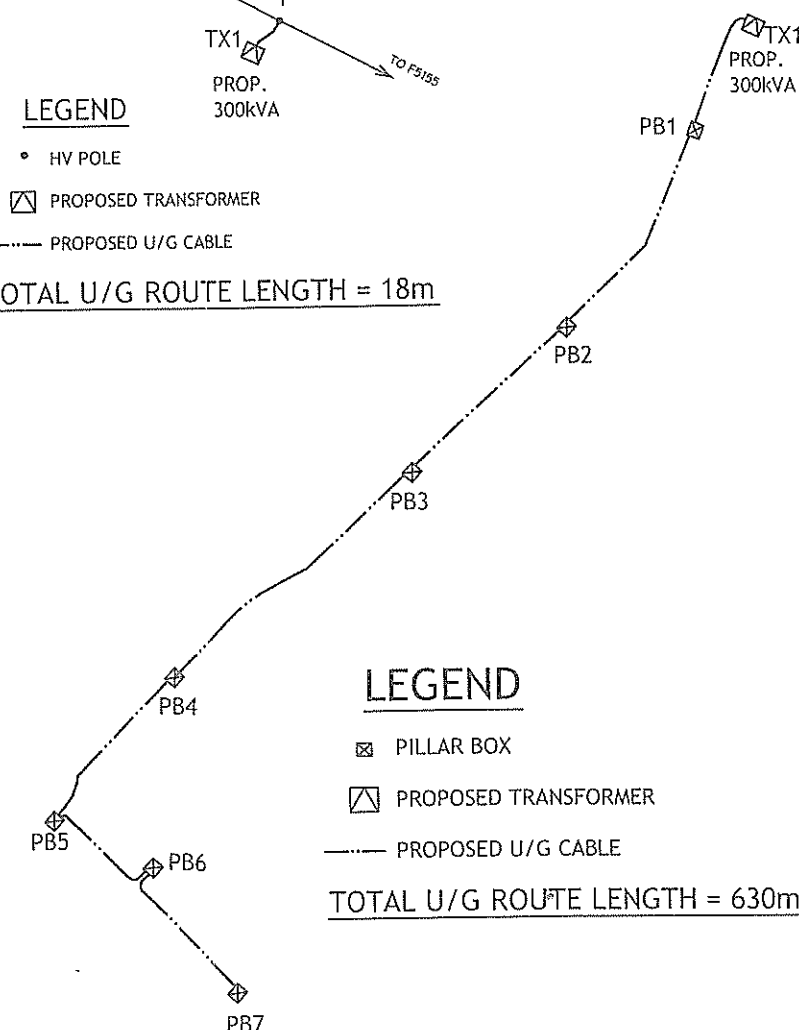
DWG NO: 04 N20 077





FINAL HV CIRCUIT






FINAL LV CIRCUIT



LEGEND

- HV POLE
 PROPOSED TRANSFORMER
 PROPOSED U/G CABLE
 TOTAL U/G ROUTE LENGTH = 18m

LEGEND

-  PILLAR BOX
 PROPOSED TRANSFORMER
 PROPOSED U/G CABLE
TOTAL U/G ROUTE LENGTH = 630m

SCOPE OF WORK:

1. ERECT 11m CONC POLE AT LOCATION MARKED 1.
2. INSTALL A 300kVA PAD-MOUNT TRANSFORMER AT LOCATION MARKED TX1.
3. DIG & LAY 1 x 95mm² 3C XLPE U/G CABLE FROM POLE 1 TO PROP. 300kVA. TERMINATE ONE END OF CABLE AT PROP. 300kVA AND THE OTHER END AT POLE 1.
4. INSTALL PILLAR BOXES AT LOCATION MARKED PB1, PB2, PB3, PB4, PB5, PB6 & PB7 .
5. DIG & LAY 1 x 185mm² 4C U/G CABLE FROM PROP 300kVA TO PB7 VIA PB1, PB2, PB3, PB4, PB5 & PB6. TERMINATE CABLES AT ALL PILLAR BOXES.
6. REMOVE EXISTING LV LINE FROM POLE A TO C. REMOVE POLES B & C.

POLE SCHEDULE									
POLE NO	POLE DESCRIPTION (WOOD, CONC OR EXISTING)	POLE LENGTH & STRENGTH (m/kN)	SPAN (m)	ANGLE OF LINE DEVIATION (")	POLE DRESSING	STAYS			REMARKS
						GROUND	FLY	GRND & FLY	
1	CONC	11/5.5	-	-	16B				UNDERGROUND TERM.
A	EXIST	-	-	-	EXIST				
B	EXIST	-	-	-	REMARKS				REMOVE POLE
C	EXIST	-	-	-	REMARKS				REMOVE POLE

							DRAWN	DEEPAK	30.08.17
							CHECKED	<i>[Signature]</i>	4.09.17
							CHIEF DRAUGHTSMAN	DEEPAK	04.09.17
1	CONSTRUCTION ISSUE	04.09.17	DDC				TEAM LEADER	Ritesh.k	04.09.17
0	CHECK PRINT ISSUE	30.08.17	DDC				ENGINEER	<i>[Signature]</i>	04.09.17
No.	REVISION	DATE	BY	CHK	PSD	APP	HEAD OF DEPARTMENT	<i>[Signature]</i>	04/09/17

FIJI ELECTRICITY AUTHORITY

SUPPLY TO PART OF N1284, N1284, LOT 1 SO4439
AND LOT 1 SO2466 AT YADUA
SIGATOKA DISTRICT (G53/15A)

DRAWING NUMBER

A3	09	N56	015
----	----	-----	-----

SCALE NTS