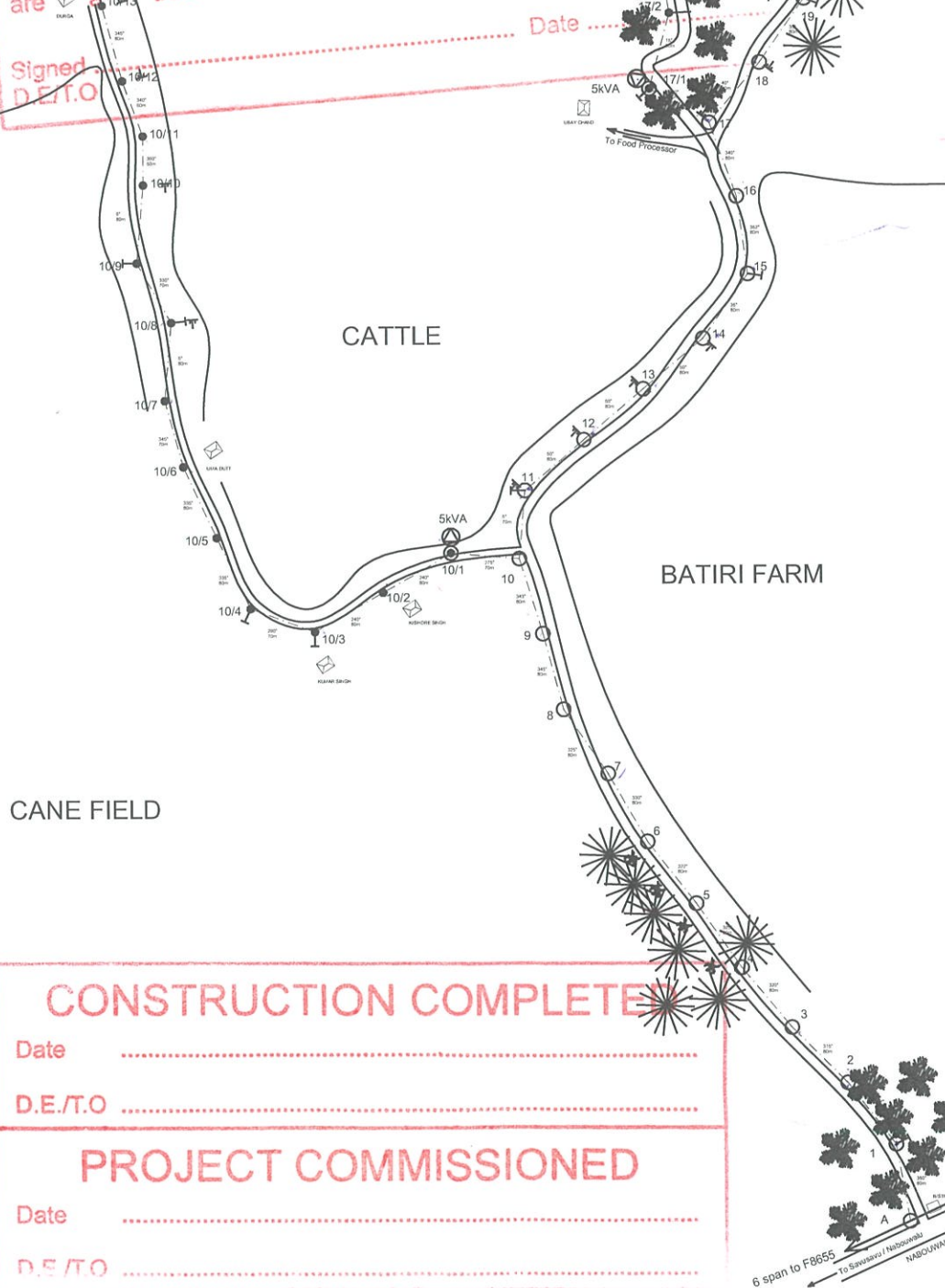


WORK COMPLETED
COPY

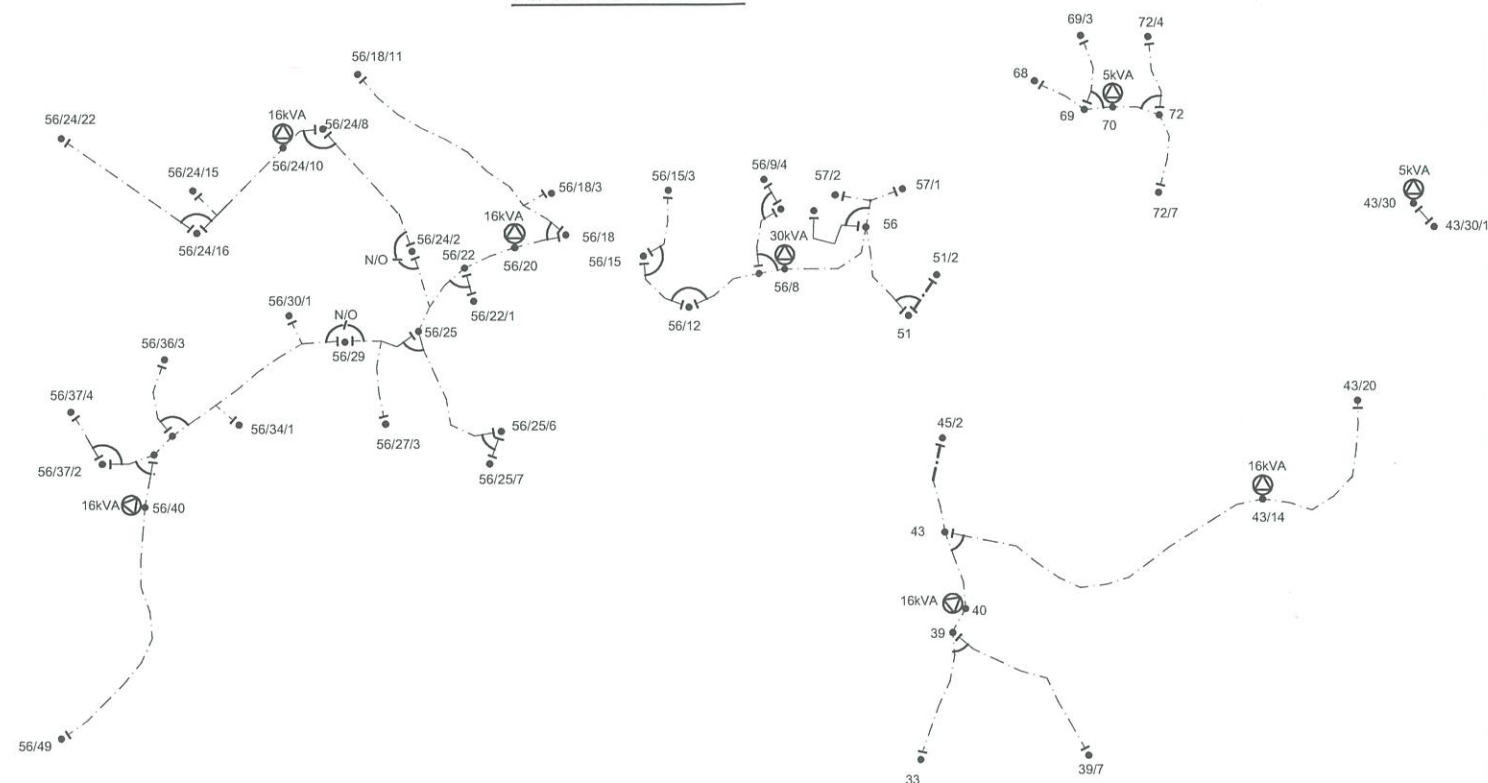
TO BE RETURNED TO THE GIS OFFICE ON
COMPLETION OF THE CONSTRUCTION WORK

I certify that the details shown on this plan
are a true record of the work as constructed
Date

Signed
D.E.T.O.



FINAL LV CIRCUIT



LEGEND

- TERMINATION POINT
- BRIDGING POINT
- STRAIN POINT
- LV LINK
- EXISTING TRANSFORMER
- PROPOSED TRANSFORMER
- EXISTING O/H LINE
- STRING 2 x 7/3.75AAC HELIUM
- TOTAL ROUTE LENGTH = 14.725m

CONSTRUCTION COMPLETE

Date

D.E./T.O.

PROJECT COMMISSIONED

Date

D.E./T.O.

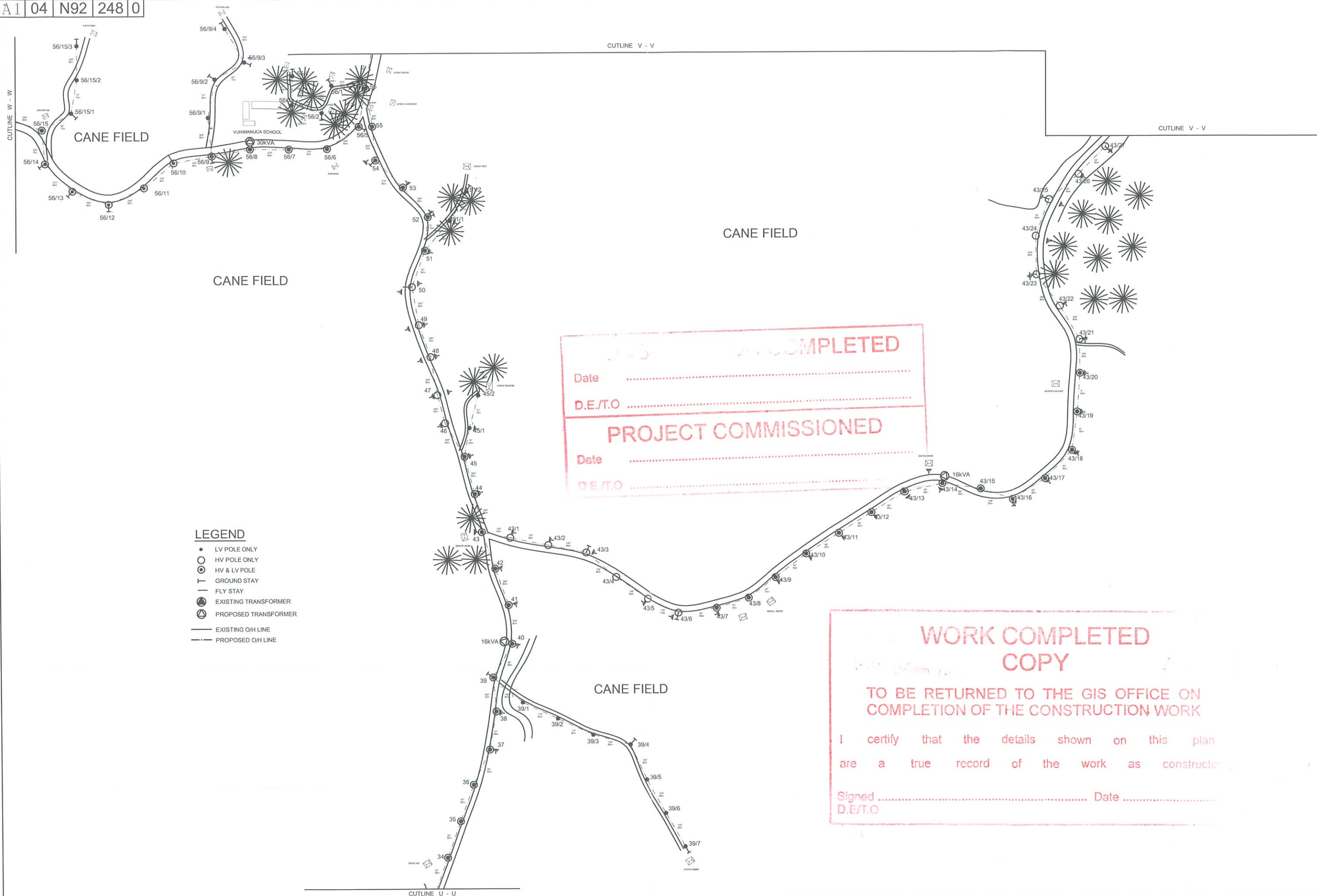
No.	REVISION	DATE	BY	CHK	PSD	APP
0	ORIGINAL ISSUE	09.09.17	K.M.			

REFERENCE	CAD FILENAME	TITLE
	C:\PROJECTS\XXXX\XXXX.DWG	
DRAWING No.		

SHEET 1 OF 5

DRAWN	KELEVI.M	09.09.17
CHECKED	SHANDIL	13.09.17
CHIEF DRAUGHTSMAN	KELEVI	13.09.17
TEAM LEADER	RITESH	13.09.17
ENGINEER	J LENOA	13.09.17
HEAD OF DEPARTMENT	BASANT	13.09.17

FIJI ELECTRICITY AUTHORITY					
SUPPLY TO VUNIMANUCA SCH LABASA DISTRICT NAVAI AREA STG 1 File No. LAB10/17					
DRAWING NUMBER					
A1	04	N92	248	0	
SCALE 1 : 5000					

[illegible]

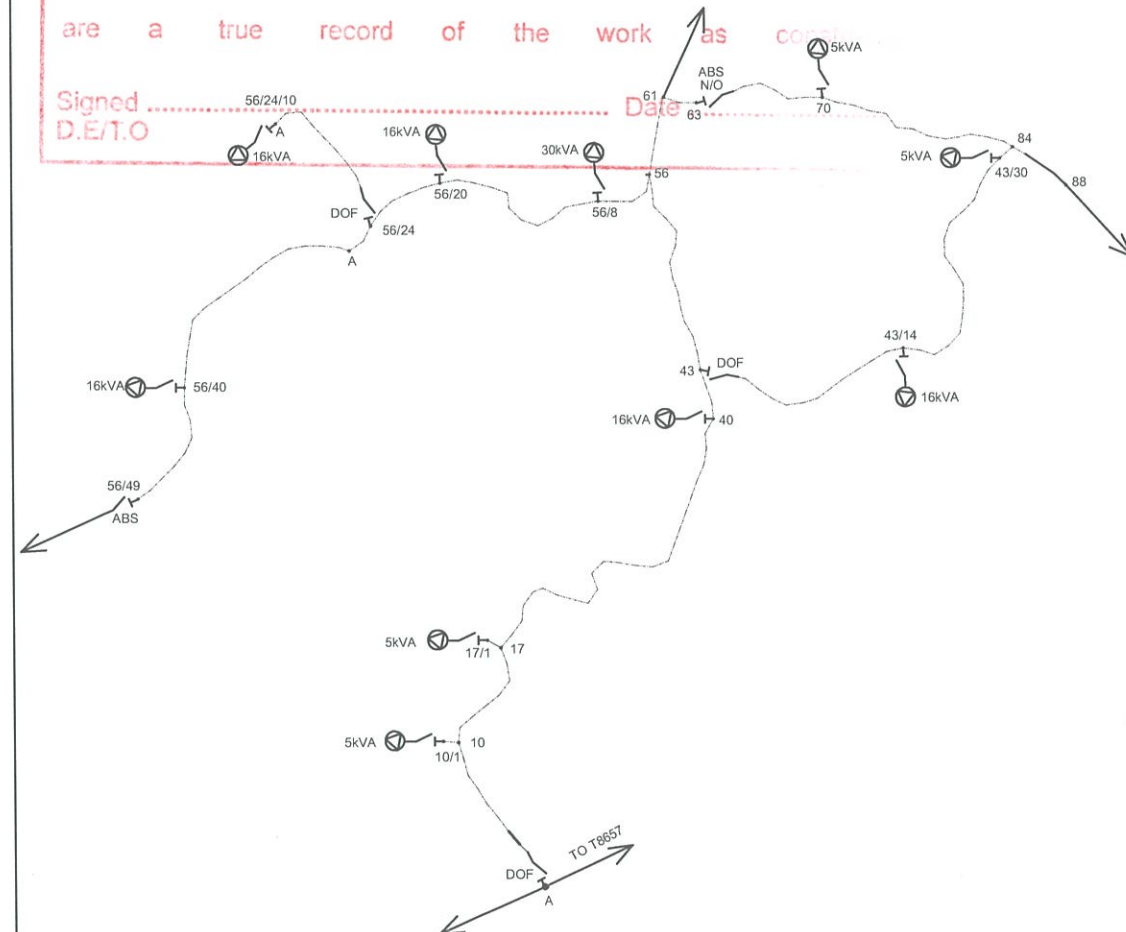
CANE FIELD

WORK COMPLETED
COPY







TO BE RETURNED TO THE GIS OFFICE ON
COMPLETION OF THE CONSTRUCTION WORK

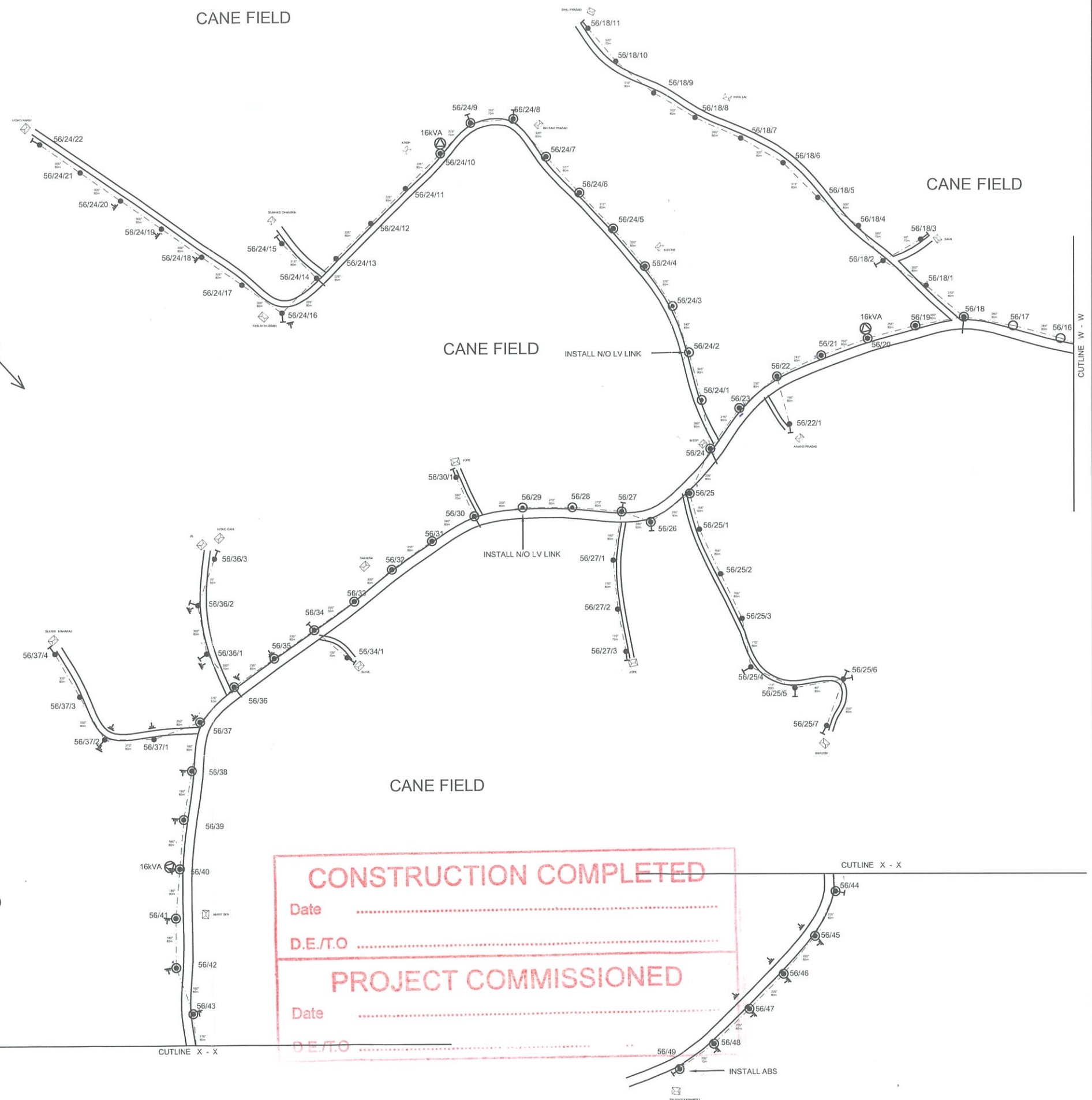
I certify that the details shown on this plan are a true record of the work ^{as} completed.

Signed 56/24/10 Date 61
D.E./T.O. 16kVA



LEGEND

- HV POLE
-  DOF / ISOLATOR / ABS
-  EXISTING TRANSFORMER
-  PROPOSED TRANSFORMER
-  EXISTING O/H LINE
-  STRING 3 x 7/3.75AAC HELIUM
TOTAL ROUTE LENGTH = 12,840m
-  STRING 2 x 7/3.75AAC HELIUM
TOTAL ROUTE LENGTH = 940m



CONSTRUCTION COMPLETED

Date

D.E./T.O.

PROJECT COMMISSIONED

Date

1 DE.T.O. 56/49

							REFERENCE		
0	ORIGINAL ISSUE	09.09.17	K.M					CAD FILENAME	C:\PROJECTS\XXXX\XXXX.DWG
No.	REVISION	DATE	BY	CHK	PSD	APP	DRAWING No.	TITLE	

SHEET 3 OF 5

DRAWN	KELEVI.M	09.09.17
CHECKED	SHANDIL	13.09.17
CHIEF DRAUGHTSMAN	KELEVI	13.09.17
TEAM LEADER	RITESH	13.09.17
ENGINEER	J LENOA	13.09.17
HEAD OF DEPARTMENT	BASANT	13.09.17

FIJI ELECTRICITY AUTHORITY

SUPPLY TO VUNIMANUCA SCH
LABASA DISTRICT
NAVAI AREA STG 1 File No. LAB10/17

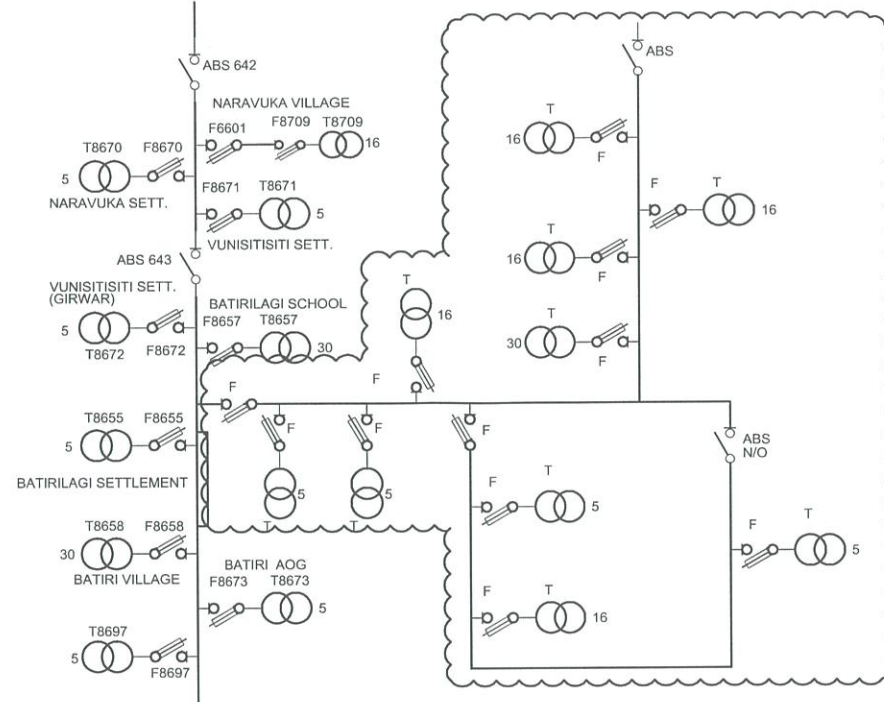
DRAWING NUMBER

A1	04	N92	248	0
----	----	-----	-----	---

SCALE 1 : 5000

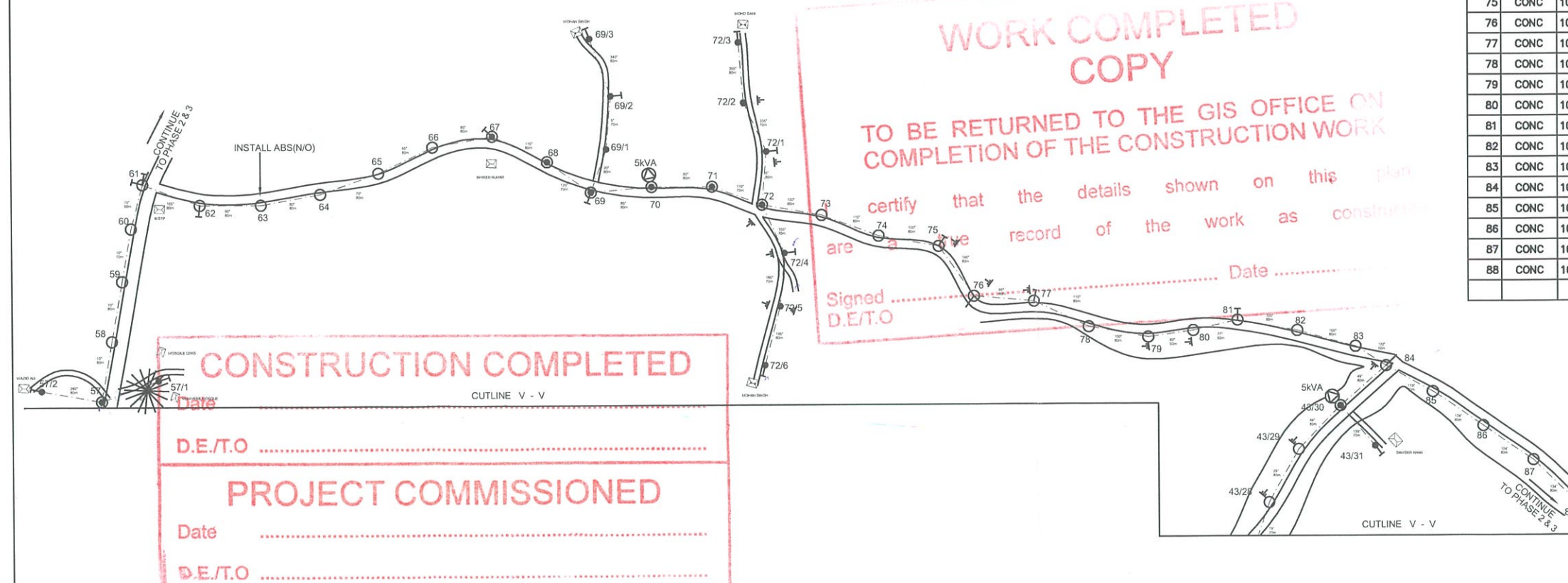
SINGLE LINE DIAGRAM

DWG No. 04 N30 015



POLE SCHEDULE										
Pole No.	Description Wood/Conc	POLE Length and Strength	SPAN	ANGLE OF LINE DEVIATION	POLE TOP Description OR	STAYS				REMARKS
						GRND	SIDE WALK	FLY	FLY GRND	
56/25/6	CONC	10.2/6	80	125	3A+3A	2				STRING 1 Ø LV ONLY
56/25/7	CONC	10.2/6	80	—	3A	1				STRING 1 Ø LV ONLY
56/26/2	CONC	10.2/6	80	55	14B+4A	1				STRING 3 Ø HV & 1 Ø LV
56/27	CONC	10.2/6	50	15/-	11B+1A+3A	1				STRING 3 Ø HV & 1 Ø LV
56/27/1	CONC	10.2/6	80	15	1A					STRING 1 Ø LV ONLY
56/27/2	CONC	10.2/6	80	5	1A					STRING 1 Ø LV ONLY
56/27/3	CONC	10.2/6	70	—	3A	1				STRING 1 Ø LV ONLY
56/28	CONC	10.2/6	80	5	11B+1A					STRING 3 Ø HV & 1 Ø LV
56/29	CONC	10.2/6	80	10	11B+5A					INSTALL N/O LV LINK
56/30	CONC	10.2/6	80	20	11B+1A+3A			1		STRING 3 Ø HV & 1 Ø LV
56/30/1	CONC	10.2/6	70	—	3A	1				STRING 1 Ø LV ONLY
56/31	CONC	10.2/6	80	5	11B+1A					STRING 3 Ø HV & 1 Ø LV
56/32	CONC	10.2/6	80	5	11B+1A					STRING 3 Ø HV & 1 Ø LV
56/33	CONC	10.2/6	80	5	11B+1A					STRING 3 Ø HV & 1 Ø LV
56/34	CONC	10.2/6	80	0	11B+1A+3A	1				STRING 3 Ø HV & 1 Ø LV
56/34/1	CONC	10.2/6	70	—	3A	1				STRING 1 Ø LV ONLY
56/35/2	CONC	10.2/6	80	0	11B+1A					STRING 3 Ø HV & 1 Ø LV
56/36	CONC	10.2/6	80	10/-	11B+1A+3A			1		STRING 3 Ø HV & 1 Ø LV
56/36/1	CONC	10.2/6	70	30	2A	1				STRING 1 Ø LV ONLY
56/36/2	CONC	10.2/6	80	30	2A	1				STRING 1 Ø LV ONLY
56/36/3	CONC	10.2/6	80	—	3A	1				STRING 1 Ø LV ONLY
56/37	CONC	10.2/6	80	25/-	12B+2A+3A					STRING 3 Ø HV & 1 Ø LV
56/37/1	CONC	10.2/6	80	20	1A					STRING 1 Ø LV ONLY
56/37/2	CONC	10.2/6	80	40	4A	1				STRING 1 Ø LV ONLY
56/37/3	CONC	10.2/6	80	0	1A					STRING 1 Ø LV ONLY
56/37/4	CONC	10.2/6	80	—	3A	1				STRING 1 Ø LV ONLY
56/38	CONC	10.2/6	80	—	11B+1A					STRING 3 Ø HV & 1 Ø LV
56/39	CONC	10.2/6	80	5	11B+1A					STRING 3 Ø HV & 1 Ø LV
56/40	11/5.5	10.2/6	80	0	11B+1A+REM	1				INSTALL 16KVA TRANSF.
56/41	CONC	10.2/6	80	5	11B+1A					STRING 3 Ø HV & 1 Ø LV
56/42	CONC	10.2/6	80	20	11B+1A					STRING 3 Ø HV & 1 Ø LV
56/43	CONC	10.2/6	80	15	11B+1A					STRING 3 Ø HV & 1 Ø LV

POLE SCHEDULE										
Pole No.	Description Wood/Con	POLE Length and Strength	SPAN	ANGLE OF LINE DEVIATION	POLE TOP Description OR	STAYS				REMARKS
						GRND	SIDE WALK	FLY	FLY + GRND	
56/44	CONC	10.2/6	80	30	12B+2A	1				STRING 3 ϕ HV & 1 ϕ LV
56/45	CONC	10.2/6	80	15	11B+1A					STRING 3 ϕ HV & 1 ϕ LV
56/46	CONC	10.2/6	80	5	11B+1A					STRING 3 ϕ HV & 1 ϕ LV
56/47	CONC	10.2/6	80	0	11B+1A					STRING 3 ϕ HV & 1 ϕ LV
56/48	CONC	10.2/6	80	10	11B+1A					STRING 3 ϕ HV & 1 ϕ LV
56/49	CONC	11/5.5	70	—	19+3A	1				INSTALL ABS (N/O)
57	CONC	11/5.5	80	0/30	11B+4A	1				STRING 3 ϕ HV & 1 ϕ LV
57/1	CONC	10.2/6	80	—	3A	1				STRING 1 ϕ LV ONLY
57/2	CONC	10.2/6	80	—	3A	1				STRING 1 ϕ LV ONLY
58	CONC	10.2/6	80	0	11B					STRING 3 ϕ HV ONLY
59	CONC	10.2/6	80	0	11B					STRING 3 ϕ HV ONLY
60	CONC	10.2/6	70	5	11B					STRING 3 ϕ HV ONLY
61	CONC	10.2/6	80	150	13B+13B	2				STRING 3 ϕ HV ONLY
62	CONC	10.2/6	80	75	14B	1				STRING 3 ϕ HV ONLY
63	CONC	11/5.5	80	10	19					INSTALL ABS (N/O)
64	CONC	10.2/6	80	10	11B					STRING 3 ϕ HV ONLY
65	CONC	10.2/6	80	5	11B					STRING 3 ϕ HV ONLY
66	CONC	10.2/6	80	15	11B					STRING 3 ϕ HV ONLY
67	CONC	10.2/6	80	35	12B+3A	1				STRING 3 ϕ HV & 1 ϕ LV
68	CONC	10.2/6	80	10	11B+1A					STRING 3 ϕ HV & 1 ϕ LV
69	CONC	10.2/6	70	40/-	14B+4A+3A	1				STRING 3 ϕ HV & 1 ϕ LV
69/1	CONC	10.2/6	80	15	1A					STRING 1 ϕ LV ONLY
69/2	CONC	10.2/6	70	25	2A	1				STRING 1 ϕ LV ONLY
69/3	CONC	10.2/6	80	—	3A	1				STRING 3 ϕ HV ONLY
70	CONC	11/5.5	80	5	11B+1A+REM					INSTALL 5kVA TRANSF.
71	CONC	10.2/6	80	20	11B+1A					STRING 3 ϕ HV & 1 ϕ LV
72	CONC	11/5.5	70	10/-	11B+4A+3A					STRING 3 ϕ HV & 1 ϕ LV
72/1	CONC	10.2/6	80	30	2A	1				STRING 1 ϕ LV ONLY
72/2	CONC	10.2/6	70	20	1A					STRING 1 ϕ LV ONLY
72/3	CONC	10.2/6	80	—	3A	1				STRING 1 ϕ LV ONLY
72/4	CONC	10.2/6	70	30	2A	1				STRING 1 ϕ LV ONLY
72/5	CONC	10.2/6	70	10	1A					STRING 1 ϕ LV ONLY
72/6	CONC	10.2/6	80	—	3A	1				STRING 1 ϕ LV ONLY
73	CONC	10.2/6	80	10	11B					STRING 3 ϕ HV ONLY
74	CONC	10.2/6	80	10	11B					STRING 3 ϕ HV ONLY
75	CONC	10.2/6	80	45	14B	1				STRING 3 ϕ HV ONLY
76	CONC	10.2/6	80	50	14B			1		STRING 3 ϕ HV ONLY
77	CONC	10.2/6	80	20	12B	1				STRING 3 ϕ HV ONLY
78	CONC	10.2/6	80	15	11B					STRING 3 ϕ HV ONLY
79	CONC	10.2/6	80	18	11B					STRING 3 ϕ HV ONLY
80	CONC	10.2/6	60	5	11B					STRING 3 ϕ HV ONLY
81	CONC	10.2/6	80	23	12B	1				STRING 3 ϕ HV ONLY
82	CONC	10.2/6	80	15	11B					STRING 3 ϕ HV ONLY
83	CONC	10.2/6	80	17	11B					STRING 3 ϕ HV ONLY
84	CONC	10.2/6	50	23	11B+13B			1		STRING 3 ϕ HV ONLY
85	CONC	10.2/6	70	5	11B					STRING 3 ϕ HV ONLY
86	CONC	10.2/6	80	0	11B					STRING 3 ϕ HV ONLY
87	CONC	10.2/6	80	10	11B					STRING 3 ϕ HV ONLY
88	CONC	10.2/6	80	—	13B	1				STRING 3 ϕ HV ONLY



							REFERENCE		
0	ORIGINAL ISSUE	09.09.17	K.M					CAD FILENAME	C:\PROJECTS\XXXX\XXXX.DWG
No	REVISION	DATE	BY	CHK	PSD	APP		DRAWING No.	TITLE

DRAWN	KELEVIM	09.09.17
CHECKED	SHANDIL	13.09.17
CHIEF DRAUGHTSMAN	KELEVI	13.09.17
TEAM LEADER	RITESH	13.09.17
ENGINEER	J LENOA	13.09.17
HEAD OF DEPARTMENT	BASANT	13.09.17

FIJI ELECTRICITY AUTHORITY

SUPPLY TO VUNIMANUCA SCH
LABASA DISTRICT
NAVAI AREA STG 1 File No. LAB10/17

DRAWING NUMBER

A1	04	N92	248	0
----	----	-----	-----	---

SCALE 1 : 5000

POLE SCHEDULE

Pole No.	Description Wood/Con or exist	POLE Length and Strength m/kN	SPAN	ANGLE OF LINE DEVIATION IN DEG.	POLE TOP Description OR	STAYS	REMARKS
						GRND SIDE WALK FLY FLY + GRND	
A	EXIST	-	-	-	Ex-11B		INSTALL TEEOFF DOF
1	CONC	10.2/6	80	28	12B	1	STRING 3 # HV ONLY
2	CONC	10.2/6	80	7	11B		STRING 3 # HV ONLY
3	CONC	10.2/6	80	5	11B		STRING 3 # HV ONLY
4	CONC	10.2/6	80	5	11B		STRING 3 # HV ONLY
5	CONC	10.2/6	80	3	11B		STRING 3 # HV ONLY
6	CONC	10.2/6	80	8	11B		STRING 3 # HV ONLY
7	CONC	10.2/6	80	5	11B		STRING 3 # HV ONLY
8	CONC	10.2/6	80	20	11B		STRING 3 # HV ONLY
9	CONC	10.2/6	80	2	11B		STRING 3 # HV ONLY
10	CONC	11/5.5	80	22/-	11B+13A		STRING 3 # HV ONLY
10/1	CONC	11/5.5	70	35	13A+3A+REM	1	INSTALL 5 KVA TRANSF.
10/2	CONC	10.2/6	80	0	1A		STRING 1 # LV ONLY
10/3	CONC	10.2/6	80	50	4A	1	STRING 1 # LV ONLY
10/4	CONC	10.2/6	70	45	4A	1	STRING 1 # LV ONLY
10/5	CONC	10.2/6	80	0	1A		STRING 1 # LV ONLY
10/6	CONC	10.2/6	80	10	1A		STRING 1 # LV ONLY
10/7	CONC	10.2/6	70	20	1A		STRING 1 # LV ONLY
10/8	CONC	10.2/6	80	35	2A	1	STRING 1 # LV ONLY
10/9	CONC	10.2/6	70	36	2A	1	STRING 1 # LV ONLY
10/10	CONC	10.2/6	80	6	1A		STRING 1 # LV ONLY
10/11	CONC	10.2/6	50	20	1A		STRING 1 # LV ONLY
10/12	CONC	10.2/6	60	5	1A		STRING 1 # LV ONLY
10/13	CONC	10.2/6	80	-	3A	1	STRING 1 # LV ONLY
11	CONC	10.2/6	70	45	12B	1	STRING 3 # HV ONLY
12	CONC	10.2/6	60	5	11B		STRING 3 # HV ONLY
13	CONC	10.2/6	80	0	11B		STRING 3 # HV ONLY
14	CONC	10.2/6	80	15	11B		STRING 3 # HV ONLY
15	CONC	10.2/6	80	42	14B	1	STRING 3 # HV ONLY
16	CONC	10.2/6	80	12	11B		STRING 3 # HV ONLY
17	CONC	10.2/6	80	60/-	14B+13A		STRING 3 # HV ONLY
17/1	CONC	11/5.5	70	75	13A+3A+REM		INSTALL 5KVA TRANSF.
17/2	CONC	10.2/6	80	25	1A	1	STRING 1 # LV ONLY
17/3	CONC	10.2/6	80	5	1A		STRING 1 # LV ONLY
17/4	CONC	10.2/6	50	105	3A+3A	1	STRING 1 # LV ONLY
17/5	CONC	10.2/6	80	0	1A		STRING 1 # LV ONLY
17/6	CONC	10.2/6	80	-	3A	1	STRING 1 # LV ONLY
18	CONC	10.2/6	80	5	11B		STRING 3 # HV ONLY
19	CONC	10.2/6	80	30	12B	1	STRING 3 # HV ONLY
20	CONC	10.2/6	70	30	12B	1	STRING 3 # HV ONLY
21	CONC	10.2/6	80	35	12B	1	STRING 3 # HV ONLY
22	CONC	10.2/6	50	45	14B	1	STRING 3 # HV ONLY
23	CONC	11/5.5	80	10	11B		STRING 3 # HV ONLY
24	CONC	11/5.5	160	70	14B	1	STRING 3 # HV ONLY
25	CONC	10.2/6	80	55	14B	1	STRING 3 # HV ONLY
26	CONC	10.2/6	80	65	14B	1	STRING 3 # HV ONLY
27	CONC	10.2/6	80	50	14B	1	STRING 3 # HV ONLY
28	CONC	10.2/6	70	5	11B		STRING 3 # HV ONLY
29	CONC	10.2/6	80	5	11B		STRING 3 # HV ONLY
30	CONC	10.2/6	80	25	12B	1	STRING 3 # HV ONLY
31	CONC	10.2/6	80	50	14B	1	STRING 3 # HV ONLY
32	CONC	10.2/6	80	0	11B		STRING 3 # HV ONLY
33	CONC	10.2/6	80	0	11B		STRING 3 # HV ONLY
34	CONC	10.2/6	80	0	11B+3A		STRING 3 # HV & 1 # LV
35	CONC	10.2/6	80	0	11B+1A		STRING 3 # HV & 1 # LV
36	CONC	10.2/6	80	5	11B+1A		STRING 3 # HV & 1 # LV
37	CONC	10.2/6	80	15	11B+1A		STRING 3 # HV & 1 # LV
38	CONC	10.2/6	80	15	11B+1A		STRING 3 # HV & 1 # LV
39	CONC	11/5.5	70	35/-	14B+4A+3A	1	STRING 3 # HV & 1 # LV
39/1	CONC	10.2/6	80	15	1A		STRING 1 # LV ONLY
39/2	CONC	10.2/6	80	0	1A		STRING 1 # LV ONLY
39/3	CONC	10.2/6	80	10	1A		STRING 1 # LV ONLY
39/4	CONC	10.2/6	80	4A	4A	1	STRING 1 # LV ONLY

POLE SCHEDULE

Pole No.	Description Wood/Con or exist	POLE Length and Strength m/kN	SPAN	ANGLE OF LINE DEVIATION IN DEG.	POLE TOP Description OR	STAYS	REMARKS
						GRND SIDE WALK FLY FLY + GRND	
39/5	CONC	10.2/6	80	5	1A		STRING 1 # LV ONLY
39/6	CONC	10.2/6	80	0	1A		STRING 1 # LV ONLY
39/7	CONC	10.2/6	80	0	3A	1	STRING 1 # LV ONLY
40	CONC	11/5.5	80	35	12B+2A+REM	1	INSTALL 16KVA TRANSF.
41	CONC	10.2/6	80	15	11B+1A		STRING 3 # HV & 1 # LV
42	CONC	10.2/6	80	0	11B+1A		STRING 3 # HV & 1 # LV
43	CONC	11/5.5	80	0	11B+16B+1A		INSTALL TEEOFF DOF
43/1	CONC	10.2/6	60	0	11B		STRING 3 # HV ONLY
43/2	CONC	10.2/6	80	0	11B		STRING 3 # HV ONLY
43/3	CONC	10.2/6	80	30	12B	1	STRING 3 # HV ONLY
43/4	CONC	10.2/6	80	5	11B		STRING 3 # HV ONLY
43/5	CONC	10.2/6	80	10	11B		STRING 3 # HV ONLY
43/6	CONC	10.2/6	70	32	12B	1	STRING 3 # HV ONLY
43/7	CONC	10.2/6	80	10	11B+3A		STRING 3 # HV & 1 # LV
43/8	CONC	10.2/6	70	20	11B+1A		STRING 3 # HV & 1 # LV
43/9	CONC	10.2/6	70	0	11B+1A		STRING 3 # HV & 1 # LV
43/10	CONC	10.2/6	80	5	11B+1A		STRING 3 # HV & 1 # LV
43/11	CONC	10.2/6	80	0	11B+1A		STRING 3 # HV & 1 # LV
43/12	CONC	10.2/6	80	0	11B+1A		STRING 3 # HV & 1 # LV
43/13	CONC	10.2/6	80	20	11B+1A		STRING 3 # HV & 1 # LV
43/14	CONC	11/5.5	80	20	11B+1A+REM		INSTALL 16KVA TRANSF.
43/15	CONC	10.2/6	80	10	11B+1A		STRING 3 # HV & 1 # LV
43/16	CONC	10.2/6	80	50	14B+4A	1	STRING 3 # HV & 1 # LV
43/17	CONC	10.2/6	80	15	11B+1A		STRING 3 # HV & 1 # LV
43/18	CONC	10.2/6	80	35	12B+2A	1	STRING 3 # HV & 1 # LV
43/19	CONC	10.2/6	80	4	11B+1A		STRING 3 # HV & 1 # LV
43/20	CONC	10.2/6	80	5	11B+3A		STRING 3 # HV & 1 # LV
43/21	CONC	10.2/6	80	30	12B	1	STRING 3 # HV ONLY
43/22	CONC	10.2/6	80	5	11B		STRING 3 # HV ONLY
43/23	CONC	10.2/6	80	35	12B		STRING 3 # HV ONLY
43/24	CONC	10.2/6	80	20	11B		STRING 3 # HV ONLY
43/25	CONC	10.2/6	80	30	12B	1	STRING 3 # HV ONLY
43/26	CONC	10.2/6	80	5	11B		STRING 3 # HV ONLY
43/27	CONC	10.2/6	80	25	11B		STRING 3 # HV ONLY
43/28	CONC	10.2/6	70	10	11B		STRING 3 # HV ONLY
43/29	CONC	10.2/6	80	15	11B+1A		STRING 3 # HV & 1 # LV
43/30	CONC	11/5.5	80	0	11B+3A+REM		INSTALL 5KVA TRANSF.
43/31	CONC	10.2/6	80	-	3A	1	STRING 1 # LV ONLY
44	CONC	10.2/6	80	5	11B+1A		STRING 3 # HV & 1 # LV
45	CONC	10.2/6	80	15/-	11B+2A		STRING 3 # HV & 1 # LV
45/1	CONC	10.2/6	80	0	1A		STRING 1 # LV ONLY
45/2	CONC	10.2/6	80	-	3A	1	STRING 1 # LV ONLY
46	CONC	10.2/6	80	15	11B		STRING 3 # HV ONLY
47	CONC	10.2/6	60	5	11B		STRING 3 # HV ONLY
48	CONC	10.2/6	80	0	11B		STRING 3 # HV ONLY
49	CONC	10.2/6	70	10	11B		STRING 3 # HV ONLY
50	CONC	10.2/6	80	30	12B	1	STRING 3 # HV ONLY
51	CONC	11/5.5	80	15/1	11B+3A+3A		STRING 3 # HV & 1 # LV
51/1	CONC	10.2/6	80	0	1A		STRING 1 # LV ONLY
51/2	CONC	10.2/6	80	1	3A	1	STRING 1 # LV ONLY
52	CONC	10.2/6	70	45	14B+4A	1	STRING 3 # HV & 1 # LV
53	CONC	10.2/6	80	5	11B+1A		STRING 3 # HV & 1 # LV
54	CONC	10.2/6	80	40	14B+4A	1	STRING 3 # HV & 1 # LV
55	CONC	10.2/6	70	5	11B+1A		STRING 3 # HV & 1 # LV
56	CONC	11/5.5	80	20/-	11B+13B+1A+1A		STRING 3 # HV & 1 # LV
56/1	CONC	10.2/6	70	75	4A	1	STRING 1 # LV ONLY
56/2	CONC	10.2/6	60	85	4A	1	STRING 1 # LV ONLY
56/3	CONC	10.2/6	65	77	4A	1	STRING 1 # LV ONLY
56/4	CONC	10.2/6	60	-	3A	1	STRING 1 # LV ONLY
56/5	CONC	10.2/6	80	45	14B+4A	1	STRING 3 # HV & 1 # LV
56/6	CONC	10.2/6	80	35	12B+2A	1	STRING 3 # HV & 1 # LV
56/7	CONC	10.2/6	80	0	11B+1A		STRING 3 # HV & 1 # LV
56/8	CONC	11/5.5	80	10	11B+1A+REM		INSTALL 30KVA TRANSF.

POLE SCHEDULE

Pole No.	Description Wood/Con or exist	POLE Length and Strength m/kN	SPAN	ANGLE OF LINE DEVIATION IN DEG.	POLE TOP Description OR	STAYS				REMARKS
						GRND	SIDE WALK	FLY	FLY + GRND	
56/9	CONC	10.2/6	80	0/-	11B+1A+3A	1				STRING 3 # HV & 1 # LV
56/9/1	CONC	10.2/6	80	15	1A					STRING 1 # LV ONLY
56/9/2	CONC	10.2/6	80	50	4A	1				STRING 1 # LV ONLY
56/9/3	CONC	10.2/6	70	90	4A	1				STRING 1 # LV ONLY
56/9/4	CONC	10.2/6	80	-	3A	1				STRING 1 # LV ONLY
56/10	CONC	10.2/6	80	30	12B+2A			1		STRING 3 # HV & 1 # LV
56/11	CONC	10.2/6	80	15	11B+1A					STRING 3 # HV & 1 # LV
56/12	CONC	10.2/6	80	45	14B+4A	1				STRING 3 # HV & 1 # LV
56/13	CONC	10.2/6	80	25	12B+1A	1				STRING 3 # HV & 1 # LV
56/14	CONC	10.2/6	80	40	14B+4A	1				STRING 3 # HV & 1 # LV
56/15	CONC	10.2/6	70	65/-	14B+4A					STRING 3 # HV & 1 # LV
56/15/1	CONC	10.2/6	70	50	4A	1				STRING 1 # LV ONLY
56/15/2	CONC	10.2/6	70	10	1A					STRING 1 # LV ONLY
56/15/3	CONC	10.2/6	80	-	3A	1				STRING 1 # LV ONLY
56/16	CONC	10.2/6	80	15	11B					STRING 3 # HV ONLY
56/17	CONC	10.2/6	80	5	11B					STRING 3 # HV ONLY
56/18	CONC	10.2/6	80	20/-	11B+3A+3A			1		STRING 3 # HV & 1 # LV
56/18/1	CONC	10.2/6	80	10	1A					STRING 1 # LV ONLY
56/18/2	CONC	10.2/6	80	25/-	2A+3A	1				STRING 1 # LV ONLY
56/18/3	CONC	10.2/6	70	-	3A	1				STRING 1 # LV ONLY
56/18/4	CONC	10.2/6	70	20	1A					STRING 1 # LV ONLY
56/18/5	CONC	10.2/6	80	10	1A					STRING 1 # LV ONLY
56/18/6	CONC	10.2/6	80	15	1A					STRING 1 # LV ONLY
56/18/7	CONC	10.2/6	80	5	1A					STRING 1 # LV ONLY
56/18/8	CONC	10.2/6	80	5	1A					STRING 1 # LV ONLY
56/18/9	CONC	10.2/6	80	10	1A					STRING 1 # LV ONLY
56/18/10	CONC	10.2/6	80	10	1A					STRING 1 # LV ONLY
56/18/11	CONC	10.2/6	70	-	3A	1				STRING 1 # LV ONLY
56/19	CONC	10.2/6	80	5	11B+1A					STRING 3 # HV & 1 # LV
56/20	CONC	11/5.5	80	5	11B+1A+REM					INSTALL 16KVA TRANSF.
56/21	CONC	10.2/6	80	5	11B+1A					STRING 3 # HV & 1 # LV
56/22	CONC	10.2/6	80	15/-	11B+1A+3A					STRING 3 # HV & 1 # LV
56/22/1	CONC	10.2/6	80	1	3A	1				STRING 1 # LV ONLY
56/23	CONC	10.2/6	80	15	11B+1A					STRING 3 # HV & 1 # LV
56/24	CONC	11/5.5	80	10/-	11B+18B+1A+3A			1		INSTALL TEE OFF DOF
56/24/1	CONC	10.2/6	80	5	11A+1A					STRING 1 # HV & 1 # LV
56/24/2	CONC	10.2/6	80	5	11A+5A					INSTALL N/O LV LINK
56/24/3	CONC	10.2/6	80	15	11A+1A					STRING 1 # HV & 1 # LV
56/24/4	CONC	10.2/6	80	5	11A+1A					STRING 1 # HV & 1 # LV
56/24/5	CONC	10.2/6	80	0	11A+1A					STRING 1 # HV & 1 # LV
56/24/6	CONC	10.2/6	80	0	11A+1A					STRING 1 # HV & 1 # LV
56/24/7	CONC	10.2/6	80	3	11A+1A					STRING 1 # HV & 1 # LV
56/24/8	CONC	10.2/6	80	45	14A+4A	1				STRING 1 # HV & 1 # LV
56/24/9	CONC	10.2/6	70	40	14A+4A	1				STRING 1 # HV & 1 # LV
56/24/10	CONC	11/5.5	70	0	13A+1A+REM					INSTALL 16KVA TRANSF.
56/24/11	CONC	10.2/6	80	0	1A					STRING 1 # LV ONLY
56/24/12	CONC	10.2/6	80	0	1A					STRING 1 # LV ONLY
56/24/13	CONC	10.2/6	80	0	1A					STRING 1 # LV ONLY
56/24/14	CONC	10.2/6	45	0/-	1A+3A			1		STRING 1 # LV ONLY
56/24/15	CONC	10.2/6	80	-	3A	1				STRING 1 # LV ONLY
56/24/16	CONC	10.2/6	80	80	4A	1				STRING 1 # LV ONLY
56/24/17	CONC	10.2/6	80	0	1A					STRING 1 # LV ONLY
56/24/18	CONC	10.2/6	80	0	1A					STRING 1 # LV ONLY
56/24/19	CONC	10.2/6	80	0	1A					STRING 1 # LV ONLY
56/24/20	CONC	10.2/6	80	0	1A					STRING 1 # LV ONLY
56/24/21	CONC	10.2/6	80	0	1A					STRING 1 # LV ONLY
56/24/22	CONC	10.2/6	80	-	3A	1				STRING 1 # LV ONLY
56/25	CONC	10.2/6	80	30/-	12B+2A+3A	1				STRING 3 # HV & 1 # LV
56/25/1	CONC	10.2/6	60	10	1A					STRING 1 # LV ONLY
56/25/2	CONC	10.2/6	80	0	1A					STRING 1 # LV ONLY
56/25/3	CONC	10.2/6	80	15	1A					STRING 1 # LV ONLY
56/25/4	CONC	10.2/6	80	50	4A	1				STRING 1 # LV ONLY
56/25/5	CONC	10.2/6	80	35	2A	1				STRING 1 # LV ONLY