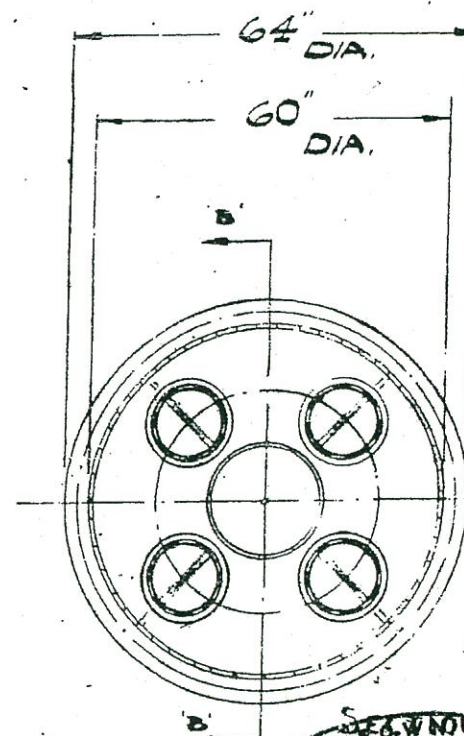
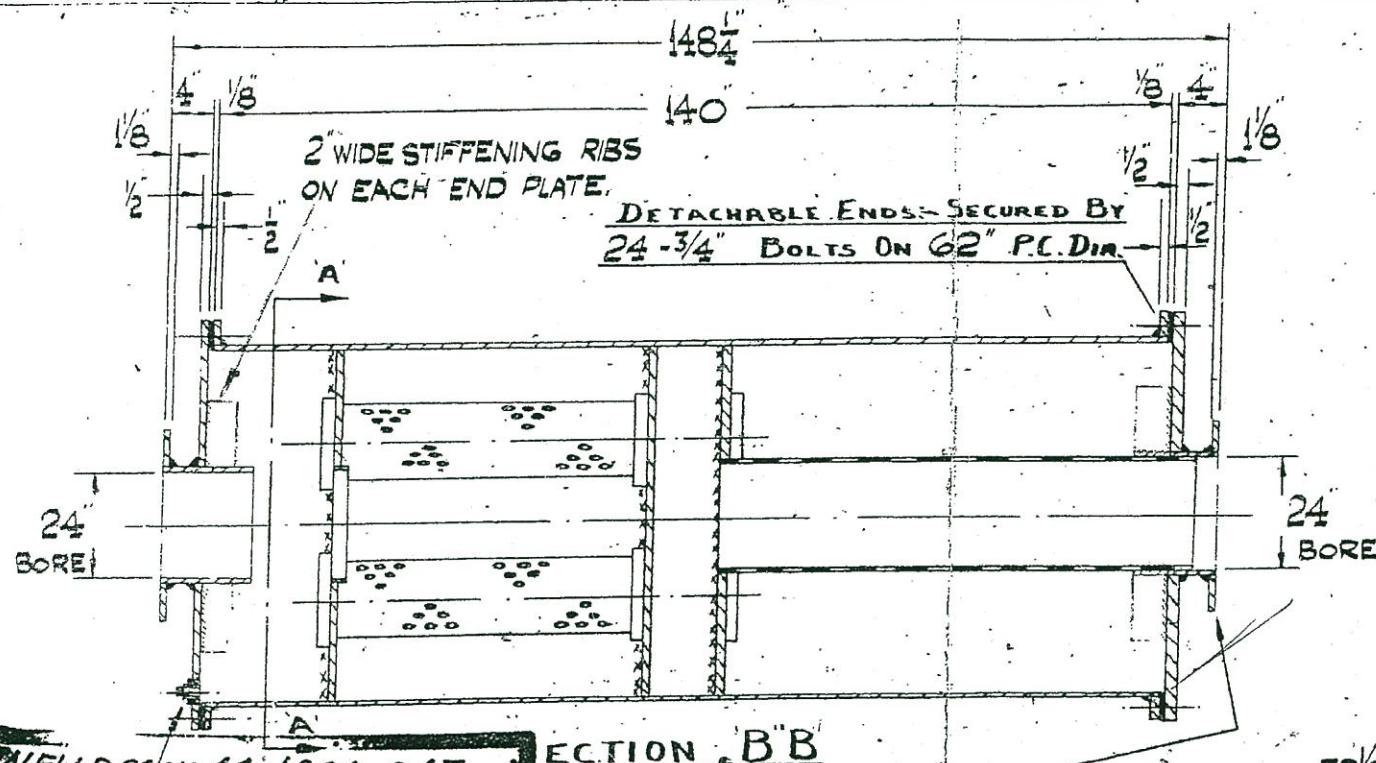


ALL B.S.P. FITTINGS TO B.S.- 84(1940). MEDIUM FIT	TOLERANCES UNLESS STATED	FRACTIONAL DIMENSIONS	MATERIAL MILD STEEL	ISSUE	MOD No.	DESCRIPTION	DATE
		2 DECIMAL DIMENSIONS		ONE			
		3 DECIMAL DIMENSIONS		TWO			
					10104	DRAIN PLUG WAS MILD STEEL	21.5.63



CONNECTING FLANGES - 32 1/2" DIA WITH 16 1/8" DIA HOLES ON 29 3/4" P.C. DIA.

NOTE:- IF SILENCER IS REQUIRED ZINC
SPRAYED, REFERENCE BECOMES SDSL 24/2/ZS



NEW DRG NO 1.1-M61-017

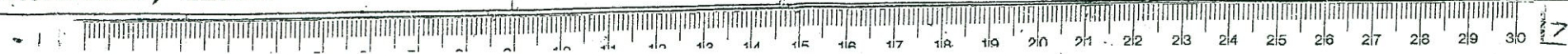
1" B.S.P. DRUGGITY
SOCKET & BRASS
DRAIN PLUG

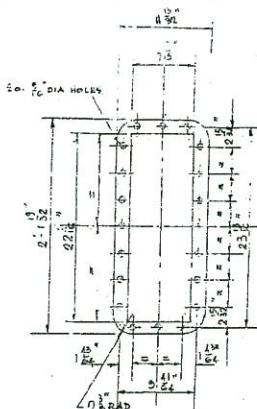
M1 027 012

BURGESS PRODUCTS CO. LTD.
BROOKFIELD ROAD,
HINCKLEY, LEICS.

BURGESS EXHAUST SILENCER
REFERENCE - SDSL 24/2

DIVISION SILENCER		DRAWING No.		ISSUE	
SCALE -		D5/10347		1	2
DRN.	10				
TRCD.					
CHKD.					
DATE	7.11.62				



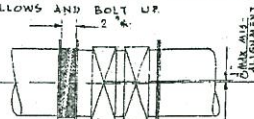


VIEW ON ARROW X
SCALE 1/2" = 1' Foot

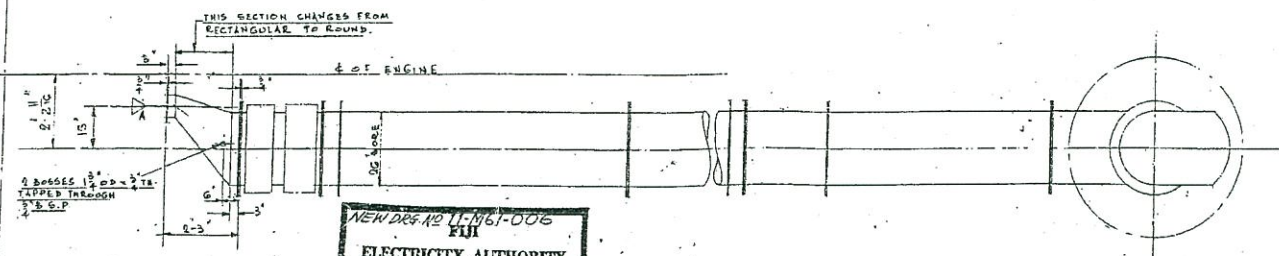
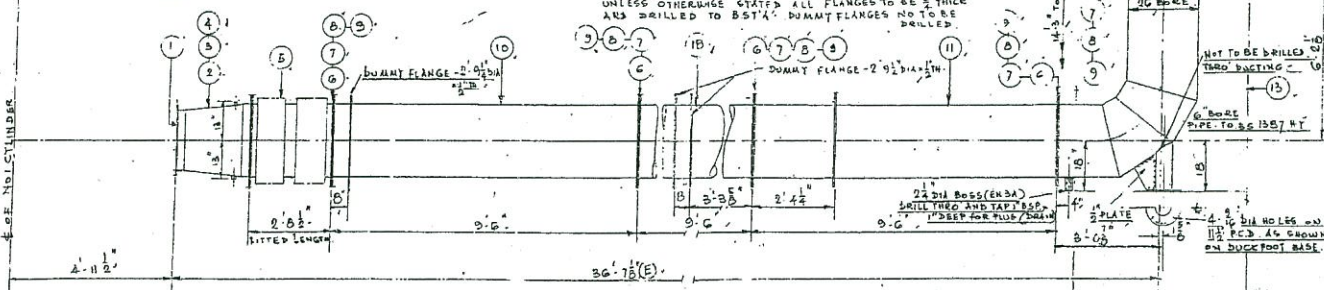
ITEM	REFERENCE	DESCRIPTION	QTY
1	NG 656	T/C JOINT	1
2		TRANSITION PIECE	1
3	SG 30/5	1" COPPER PLUG	1
4	WUGG/10/2	1" COPPER WASHER	2
5	62527/7	26" BORE BELLOWS UNIT	1
6	G4/117	26" EXHAUST JOINT	7
7	FN116/24	1" B.S.F. 1/2" LG. BOLT	112
8	FN116	1" B.S.F. NUT	112
9	GW16	1" ST. WASHER	112
10		26" BORE EXHAUST PIPE	1
11		26" BORE EXHAUST PIPE	1
12		SILENCER SUPPORT	1
13		26" BORE EXHAUST PIPE BEND	1
14	HP326/4	26" BORE EXHAUST SILENCER	1
15		26" BORE EXHAUST PIPE (END)	1
16		26" BORE EXHAUST PIPE (END)	2
17	G5547	120T OF ROLLER SUPPORT	2
18		26" BORE EXHAUST PIPE	1

METHOD OF OBTAINING BELLOWS ALIGNMENT

ASSEMBLY TRANSITION PIPE ON T/C OUTLET AND TIGHTEN UP TEMPORARY POSITION SILENCER AS SHOWN. ASSEMBLE EXHAUST PIPES AND BELLOWS ONTO SILENCER TO ASSIST THE OPERATION A 2" WOOD SPACER MAY BE POSITIONED BETWEEN THE BELLOWS AND TRANSITION PIPE AND THE JOINT TEMPORARILY FASTENED WITH FOUR BOLTS. ERECT AND ADJUST PERMANENT SUPPORTS REMOVE SPACER AND TEMPORARILY SUPPORT THE BELLOWS LOOSE IN LINE WITH TRANSITION FLANGE CHECK GAP AND ALIGNMENT AND ADJUST IF NECESSARY BY MOVING SILENCER SUPPORTS. GROUT IN TIGHTEN UP SILENCER AND ALL PIPE JOINTS RE CHECK GAP AND ALIGNMENT FIT JOINT ON BELLOWS AND BOLT UP.



NOTES:
DIMENSIONS FOLLOWED BY LETTER(S) ARE INSTALLED DIMENSIONS AND INCLUDE FOR JOINTS OR PACKERS WHERE NECESSARY. THESE DIMENSIONS ARE SUBJECT TO A TOLERANCE OF $\pm 1/4$ " ALL OTHER DIMENSIONS ARE FOR PIPE MANUFACTURING AND NO ALTERATIONS FOR JOINTS ETC SHOULD BE MADE THESE DIMENSIONS ARE SUBJECT TO THE LIMITS IN AB.105.1 MATERIALS FOR PIPES AND FLANGES BS 1448 EN2 PIPE WALL THICKNESS $3/16$ UNLESS OTHERWISE STATED ALL FLANGES TO BE $3/4$ " THICK AND DRILLED TO BS 742 DUMMY FLANGES NOT TO BE DRILLED.



NEW DES. NO. 11-1061-006
ELECTRICITY AUTHORITY
DRAWING NUMBER
11-1061-001

MODIFICATIONS	DATE	BY	DESCRIPTION
1	10/1/51	J.P.	STUDY FOR 10/1/51
2	10/1/51	J.P.	STUDY FOR 10/1/51
3	10/1/51	J.P.	STUDY FOR 10/1/51
4	10/1/51	J.P.	STUDY FOR 10/1/51
5	10/1/51	J.P.	STUDY FOR 10/1/51
6	10/1/51	J.P.	STUDY FOR 10/1/51
7	10/1/51	J.P.	STUDY FOR 10/1/51
8	10/1/51	J.P.	STUDY FOR 10/1/51
9	10/1/51	J.P.	STUDY FOR 10/1/51
10	10/1/51	J.P.	STUDY FOR 10/1/51
11	10/1/51	J.P.	STUDY FOR 10/1/51
12	10/1/51	J.P.	STUDY FOR 10/1/51
13	10/1/51	J.P.	STUDY FOR 10/1/51
14	10/1/51	J.P.	STUDY FOR 10/1/51
15	10/1/51	J.P.	STUDY FOR 10/1/51
16	10/1/51	J.P.	STUDY FOR 10/1/51
17	10/1/51	J.P.	STUDY FOR 10/1/51
18	10/1/51	J.P.	STUDY FOR 10/1/51
19	10/1/51	J.P.	STUDY FOR 10/1/51
20	10/1/51	J.P.	STUDY FOR 10/1/51

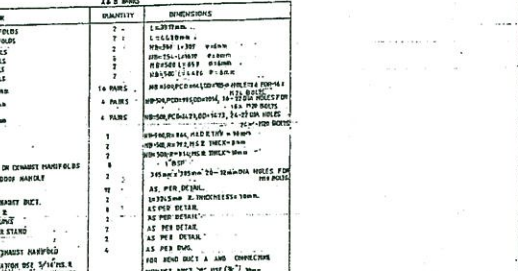
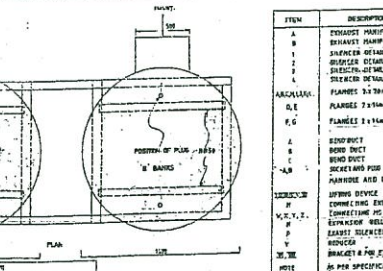
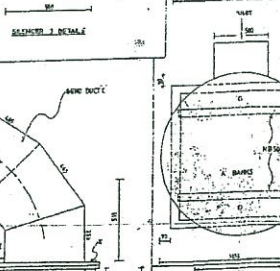
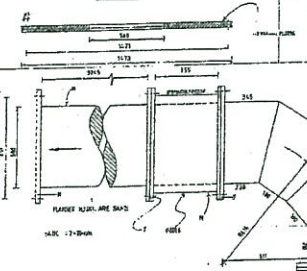
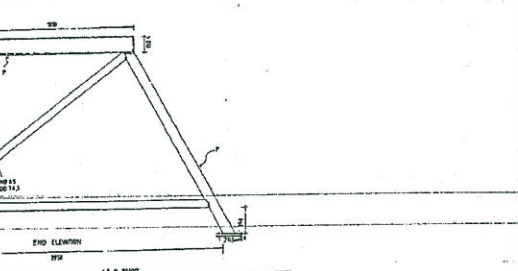
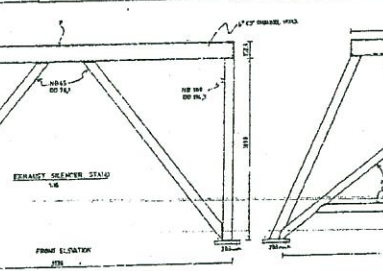
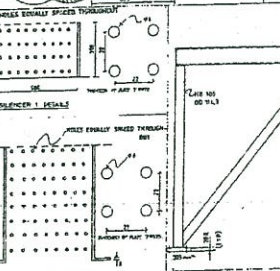
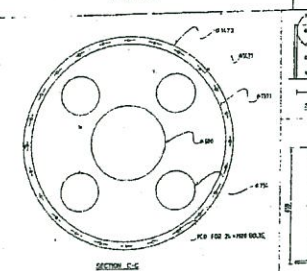
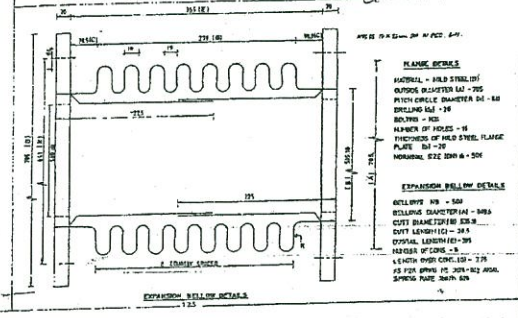
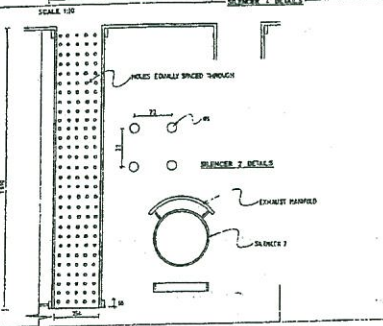
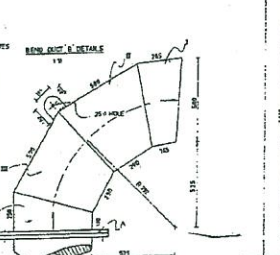
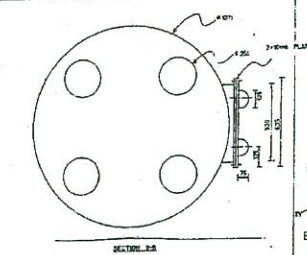
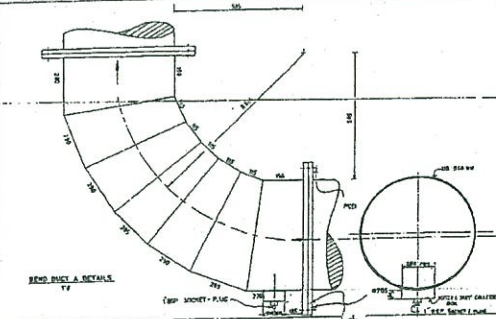
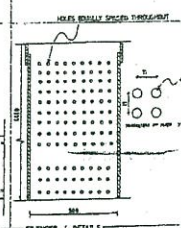
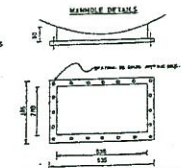
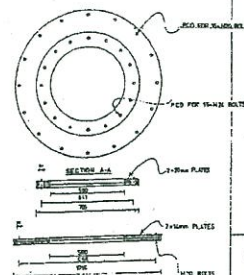
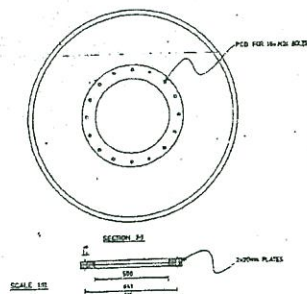
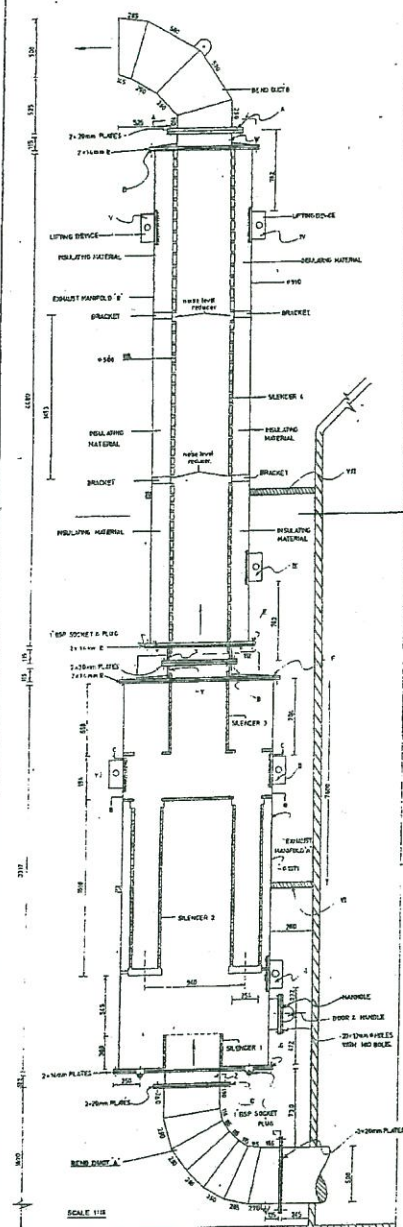
DRG. No. 65046

DRG. No. 65046

DRG. No. 65046

DRG. No. 65046



[illegible]

STANDARD BS4344:PART 3:1968 SPECIFICATION FOR FLANGES AND BOLTING
FOR PIPES VALVES AND FITTINGS (METRIC SERIES)
BS4718:1977 SLICERS FOR AIR DISTRIBUTION SYSTEM.

WORKING TEMPERATURE 600°C ALL DIMENSIONS ARE IN MILLIMETERS

FLI ELECTRICITY AUTHORITY

EXHAUST SILENCER FOR MIRRLEES NATIONAL

KINCKA POWER STATION

DRAWING NUMBER:

AO	21	M61	004
----	----	-----	-----

NO	DATE	TIME	LOCATION	REMARKS
1	10/10/19	10:00	100m	100m

SCALE AS SHOWN

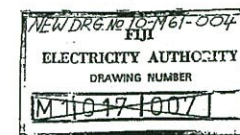
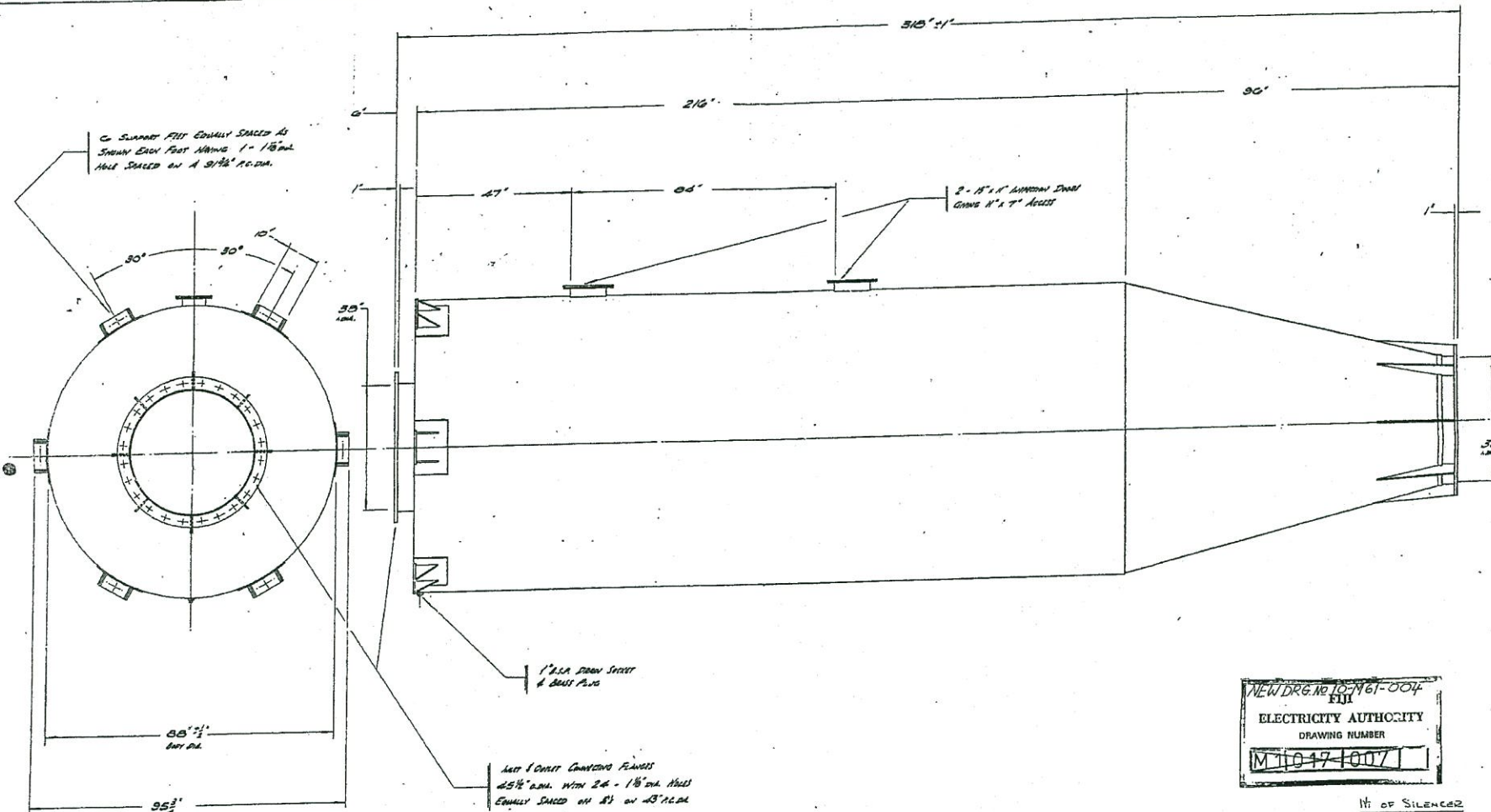
DO NOT SCALE

ALL B.S.P. FITTINGS
TO B.S. 41 (1940).
MEDIUM FIT

TOLERANCES UNLESS STATED

FRACTIONAL DIMENSIONS \pm
2 DECIMAL DIMENSIONS \pm
3 DECIMAL DIMENSIONS \pm

REV.	MOD. No.	DESCRIPTION	DATE



WHER SIDDELEY BRUITS & CO. LTD.
TRACTS ENGINEERS LTD.
G. NO. 3162/D350-09/A

NO. OF SILENCER
4.5 TONS

CONTRACT 6615

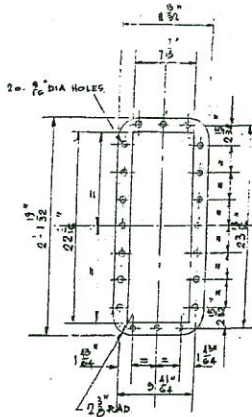
ENEX Ref No MCI-58

BURGESS PRODUCTS CO. LTD.
BROOKFIELD ROAD,
HINCKLEY, LEICS.

BURGESS EXHAUST SILENCER

MATERIAL	SCALE	PRODUCT	DRAWING No.
MS	1/2\"	Exhaust Silencer	475-38/3
Size			
DRN. BY			
TRCD. BY			
CHKD. BY			
DATE	18.8.74		

ISSUE

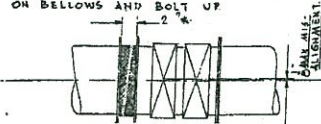


VIEW ON ARROW A
SCALE 1/2" = 1 FOOT

ITEM	REFERENCE	DESCRIPTION	QTY
1	W656	Y/C JOINT	1
2		TRANSITION PIECE	1
3	5030/5	3" BSP BRASS PLUG	2
4	EW66/11/2	3" COPPER WASHER	2
5	62587/7	26" BORE BELLOWS UNIT	1
6	G4117	26" EXHAUST JOINT	7
7	FB116/24	1" BSF 3/16 BOLT	112
8	FN116	1" BSF WUT.	112
9	GW16	1" ST WASHER	112
10		26" BORE EXHAUST PIPE	1
11		26" BORE EXHAUST PIPE	1
13		SILENCER SUPPORT	1
14		26" BORE EXHAUST PIPE BEND	1
15	BP506/4	26" BORE EXHAUST SILENCER	1
16		26" BORE EXHAUST PIPE (END)	1
17	65947	ASST. OF ROLLER SUPPORT	2
18		26" BORE EXHAUST PIPE	1

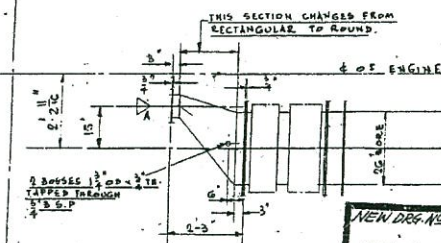
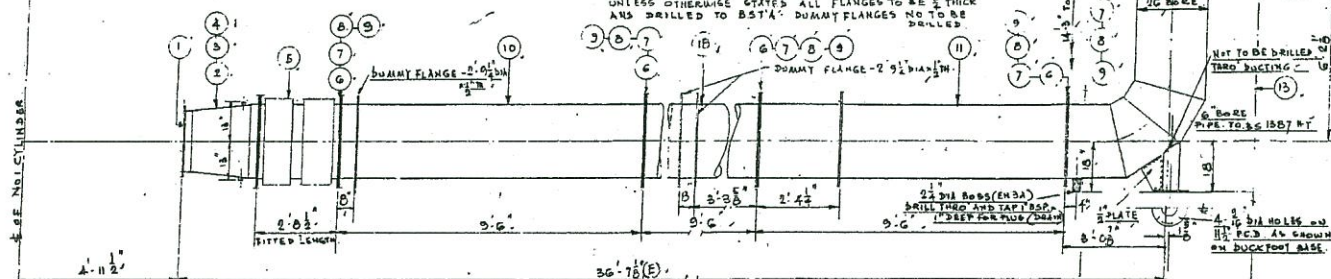
METHOD OF OBTAINING BELLOWS ALIGNMENT

ASSEMBLY TRANSITION PIPE ON Y/C OUTLET AND TIGHTEN UP TEMPORARILY POSITION SILENCER AS SHOWN. ASSEMBLE EXHAUST PIPES AND BELLOWS ON TO SILENCER TO ASSIST THE OPERATION A 2" WOOD SPACER MAY BE POSITIONED BETWEEN THE BELLOWS AND TRANSITION PIPE AND THE JOINT TEMPORARILY FASTENED WITH FOUR BOLTS. ERECT AND ADJUST PERMANENT SUPPORTS. REMOVE SPACER AND TEMPORARILY SUPPORT THE BELLOWS LOOSE IN LINE WITH TRANSITION FLANGE CHECK GAP AND ALIGNMENT AND ADJUST IF NECESSARY BY MOVING SILENCER SUPPORTS. GROUT IN TIGHTER UP SILENCER AND ALL PIPE JOINTS RE CHECK GAP AND ALIGNMENT FIT JOINT ON BELLOWS AND BOLT UP.



NOTES:

DIMENSIONS FOLLOWED BY LETTER(S) ARE INSTALLED DIMENSIONS AND INCLUDE FOR JOINTS OR PICKERS WHERE NECESSARY. THESE DIMENSIONS ARE SUBJECT TO A TOLERANCE OF $\pm \frac{1}{8}$ " ALL OTHER DIMENSIONS ARE FOR PIPE MANUFACTURING AND NO ALTERATIONS FOR JOINTS ETC SHOULD BE MADE THESE DIMENSIONS ARE SUBJECT TO THE LIMITS IN BS.1561 MATERIALS FOR PIPES AND FLANGES: BS 1449 EN2 PIPE WALL THICKNESS $\frac{3}{16}$ " UNLESS OTHERWISE STATED ALL FLANGES TO BE $\frac{3}{8}$ " THICK AND DRILLED TO BS741 DUMMY FLANGES NO TO BE DRILLED



NEW Dwg No. 11-1061-006
ELECTRICITY AUTHORITY
DRAWING NUMBER
M11027-001

MODIFICATIONS

NO.	DATE	DESCRIPTION
1	10/1/51	1. 26" BORE EXHAUST PIPE
2	10/1/51	2. 26" BORE EXHAUST PIPE
3	10/1/51	3. 26" BORE EXHAUST PIPE
4	10/1/51	4. 26" BORE EXHAUST PIPE
5	10/1/51	5. 26" BORE EXHAUST PIPE
6	10/1/51	6. 26" BORE EXHAUST PIPE
7	10/1/51	7. 26" BORE EXHAUST PIPE
8	10/1/51	8. 26" BORE EXHAUST PIPE
9	10/1/51	9. 26" BORE EXHAUST PIPE
10	10/1/51	10. 26" BORE EXHAUST PIPE
11	10/1/51	11. 26" BORE EXHAUST PIPE
12	10/1/51	12. 26" BORE EXHAUST PIPE
13	10/1/51	13. 26" BORE EXHAUST PIPE
14	10/1/51	14. 26" BORE EXHAUST PIPE
15	10/1/51	15. 26" BORE EXHAUST PIPE
16	10/1/51	16. 26" BORE EXHAUST PIPE
17	10/1/51	17. 26" BORE EXHAUST PIPE
18	10/1/51	18. 26" BORE EXHAUST PIPE
19	10/1/51	19. 26" BORE EXHAUST PIPE
20	10/1/51	20. 26" BORE EXHAUST PIPE

Dwg. No. 65946

REMOVE ALL SHARP EDGES WHEN IN DOUBT ASK
TITLE & ALIGNMENT OF 26" BORE EXHAUST
DOWLING
UNLESS OTHERWISE STATED BY MACHINE
LIMITS TO BE IN INCHES
SCALE 1/2" = 1 FOOT
DRAWN BY: [Signature]
CHECKED BY: [Signature]
Dwg. No. 65946
ISSUE 1